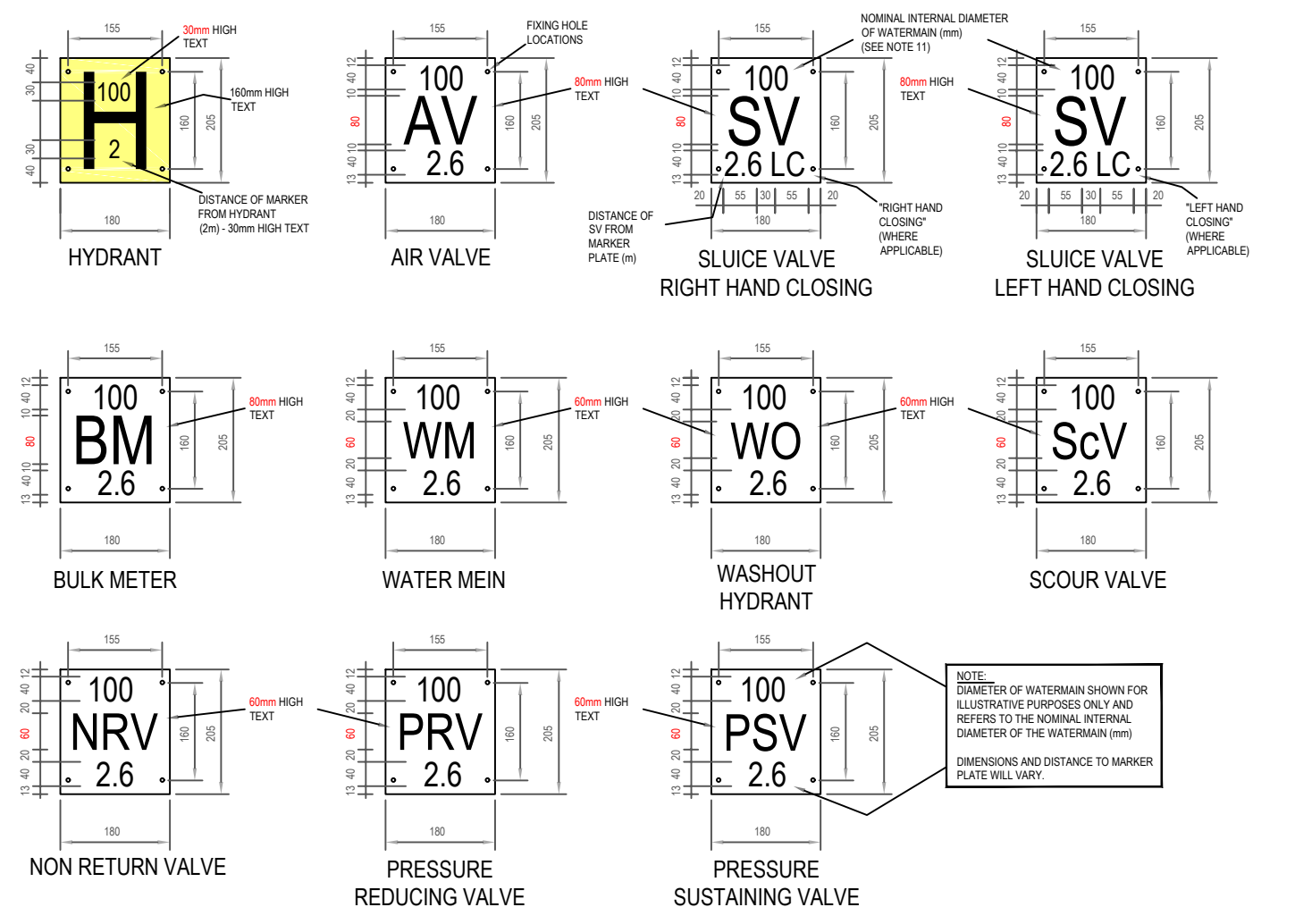
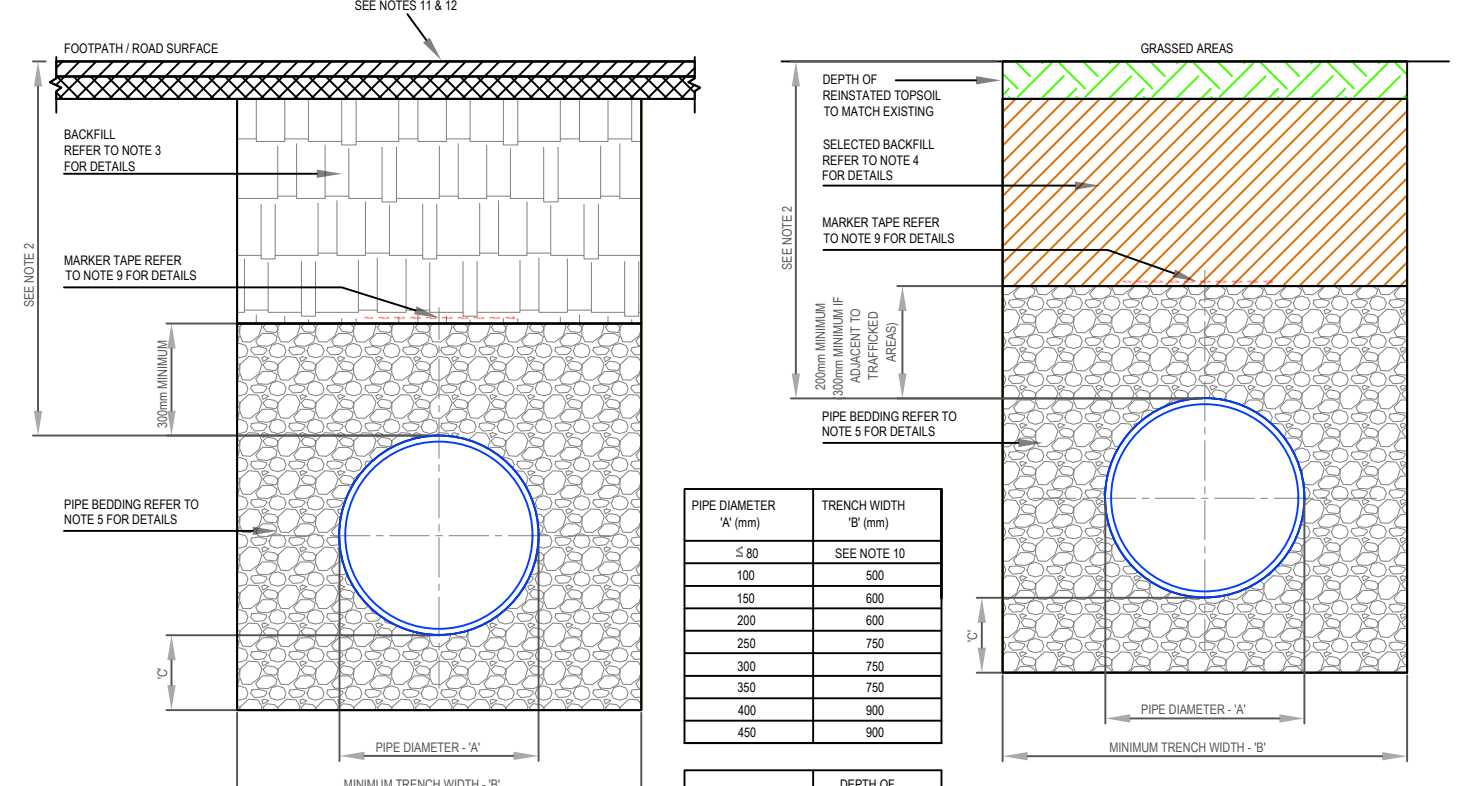


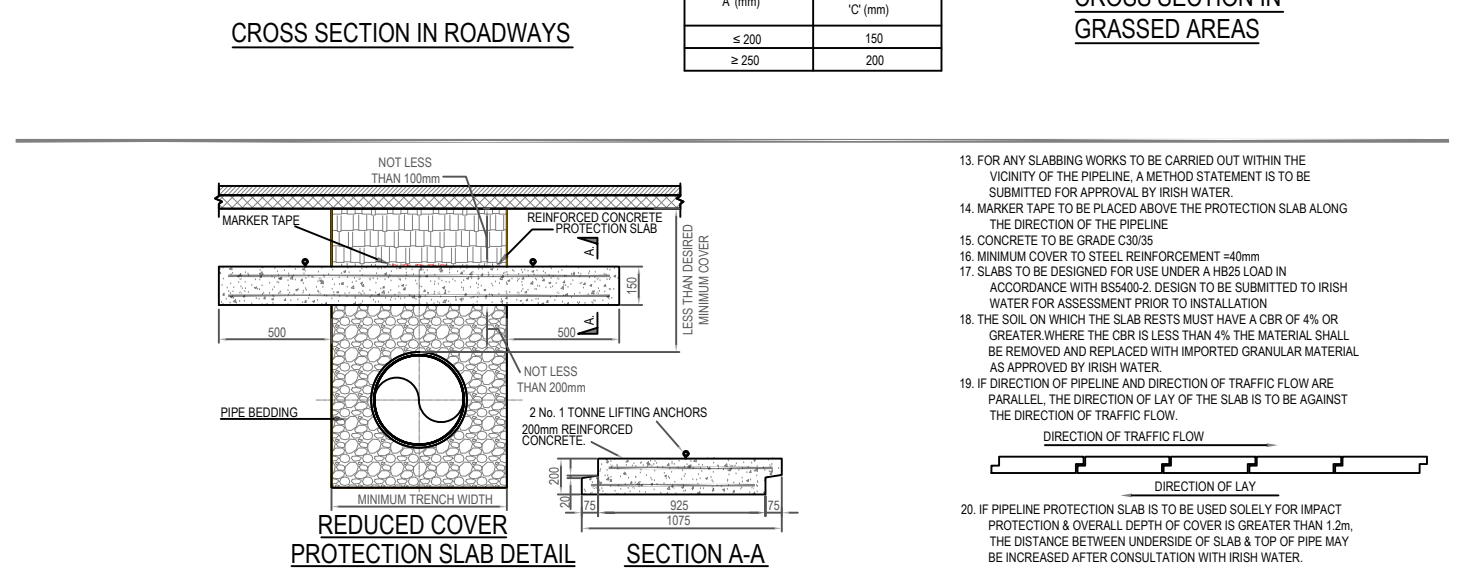
REINFORCEMENT DETAILS

- WHERE PRACTICAL MARKER PLATES SHALL BE FIRED TO ADJACENT WALLS OR ALTERNATIVELY ATTACHED TO MARKER POSTS
- PLATES TO BE FIRED TO POSITION USING WALL PLUGS AND STAINLESS STEEL BOLTS
- MARKER PLATES TO BE MANUFACTURED IN ACCORDANCE WITH BS 2013
- FOR HYDRANT PLATE ALL DIMENSIONS SHOULD BE BLACK AND THE REMAINDER OF THE FRONT FACE SHOULD CONFORM TO COLOUR RESISTANCE TO RUST
- PIPE DIAMETER ON HYDRANT PLATE TO REFER TO WATERMAIN NOT BRANCH
- SLEEVE VALVE, AIR VALVE, SCOUR VALVE AND WASHOUT HYDRANT ETC SHOULD BE CAST ALUMINUM ALL DIMENSIONS SHOULD BE BLACK ON WHITE PAINT BACKGROUND. ALTERNATIVE MATERIAL MAY BE USED SUBJECT TO ACCEPTANCE BY IRISH WATER
- CONCRETE MARKER POST TO BE GRADE C25/30 AND IN ACCORDANCE WITH EN 2062013
- CONCRETE MARKER TO BE GRADE C20/25
- PLASTIC MARKER POSTS ARE NOT ACCEPTABLE
- PAINTING SPECIFICATION 1 PACK BROWN PRIMER 40, 40 MICRONS FOLLOWED BY 2 PACK HIGH GLOSS POLYURETHANE TOP COAT APPLIED AT 40 MICRONS
- REFERENCES TO PIPE DIAMETERS ON MARKER PLATES REFER SPECIFICALLY TO THE NOMINAL INTERNAL DIAMETER OF THE PIPE REGARDLESS OF PIPE MATERIAL

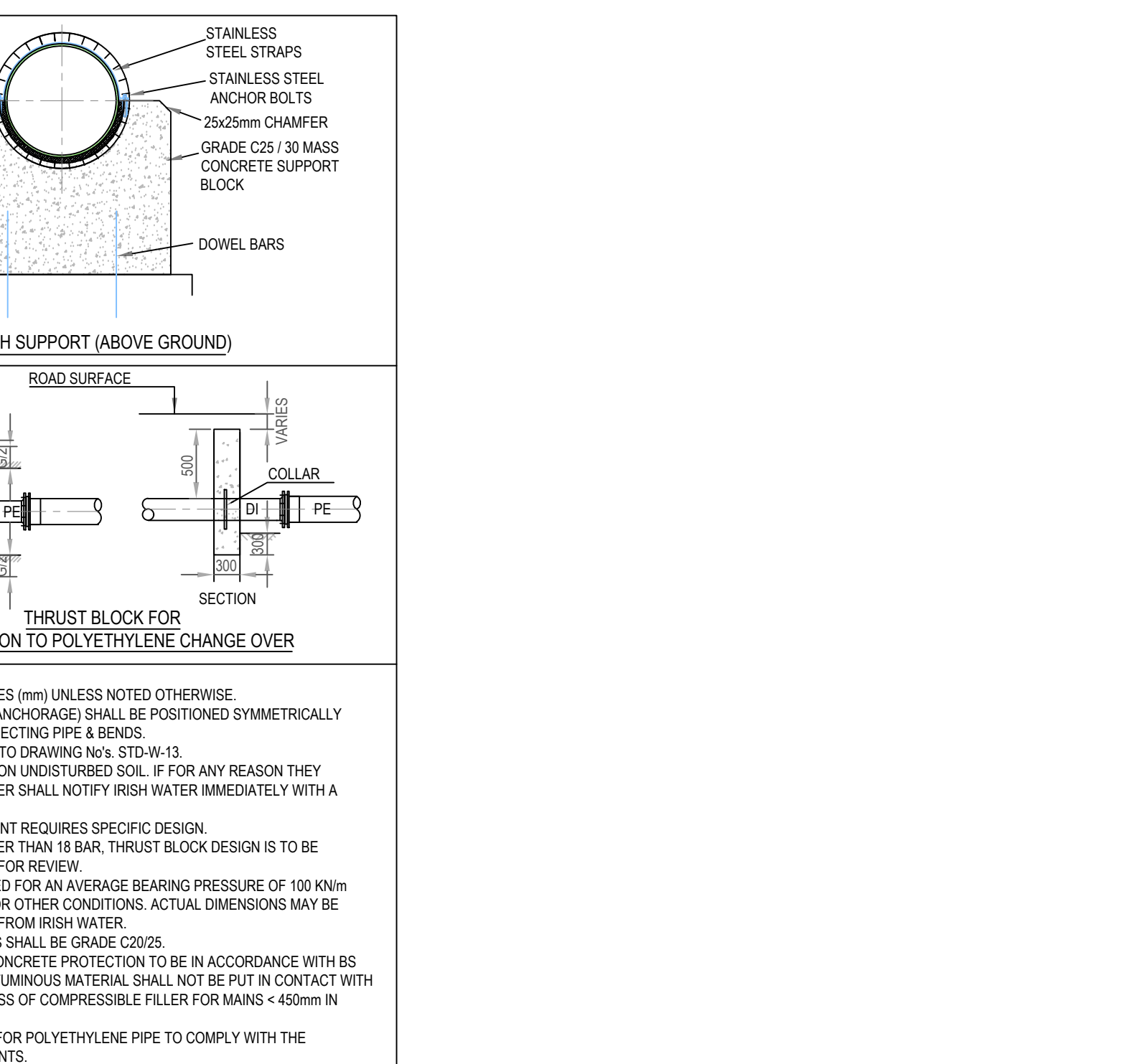
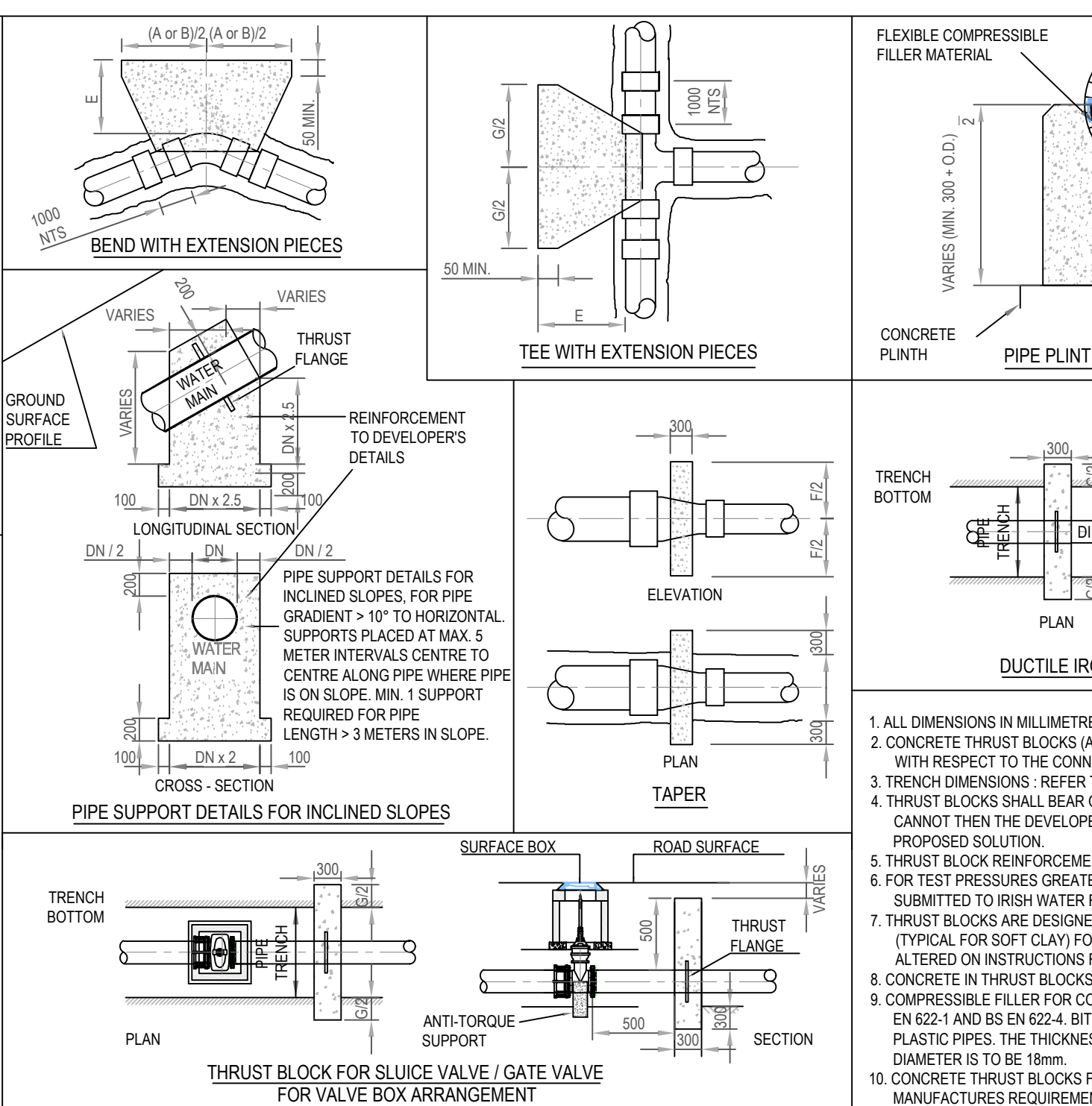
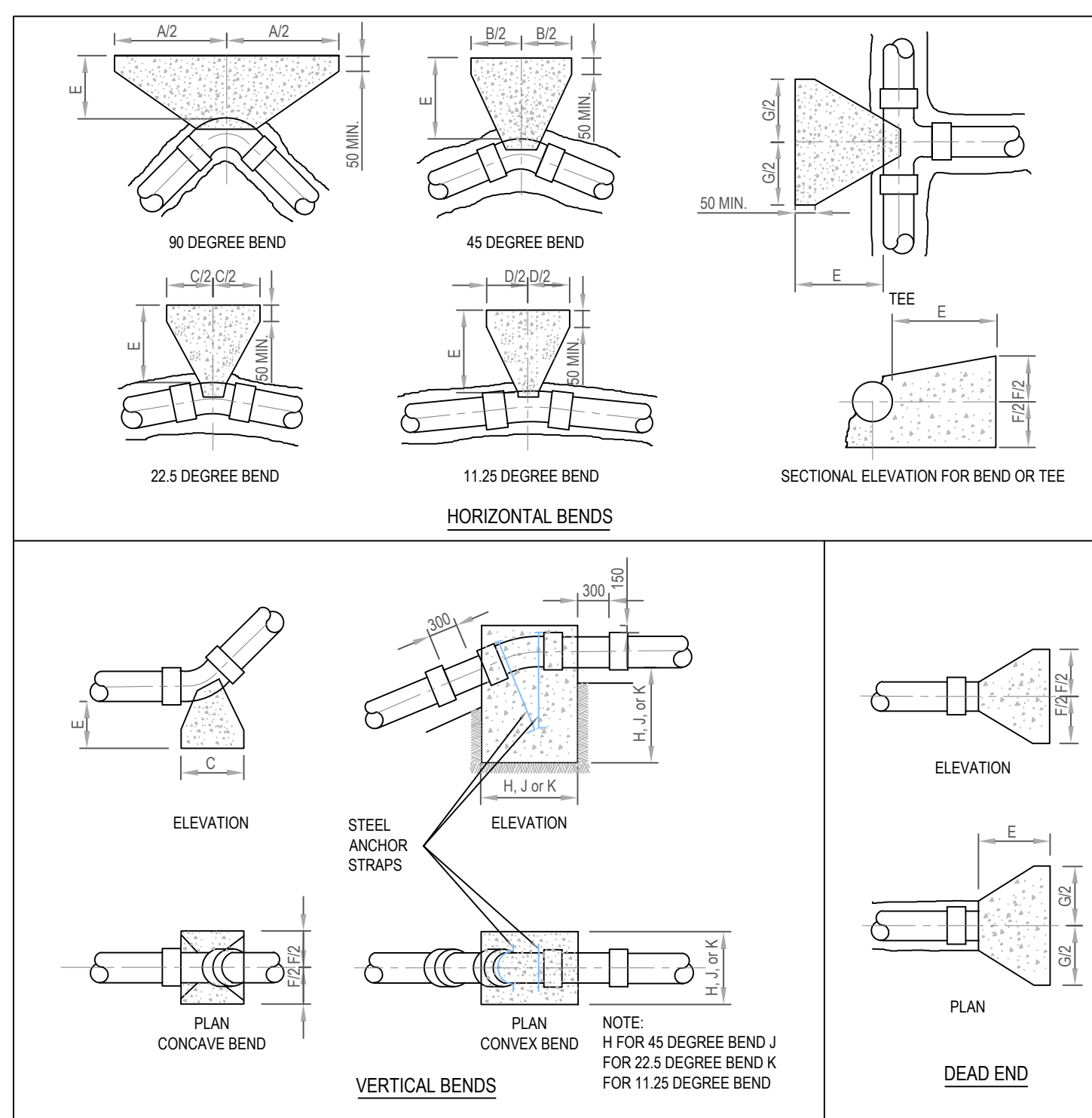
- ALL DIMENSIONS ARE IN MILLIMETRES (MM) UNLESS NOTED OTHERWISE
- THE MINIMUM DEPTH OF COVER FROM THE FINISHED GROUND LEVEL TO THE EXTERNAL CROWN OF THE PIPE SHALL BE 900mm WHERE THE PIPE IS TO BE LOCATED IN HOUSING ESTATE ROADS. GREATER DEPTHS OF COVER ARE TO BE PROVIDED WHERE HIGH TRAFFIC LOADS ARE ANTICIPATED. THE DEPTH OF COVER FOR A WATERMAIN SHALL BE 1200mm UNLESS PRACTICABLE & SHOULD NOT EXCEED 1300mm
- CLASS 8/4 BACKFILL MATERIAL IN ACCORDANCE WITH THE NATIONAL ROAD AUTHORITY SPECIFICATION FOR ROAD WORKS IS TO BE USED AS BACKFILL MATERIAL WHERE THE WATER MAIN IS LOCATED ON ROAD. FOOTPATHS OR WHEN THE NEAREST PART OF THE TRENCH IS WITHIN 1m OF THE PAVED EDGE OF THE ROADWAY. CLASS 8/4 IS TO BE COMPACTED AS PER CLAUSE 802 OF THE NATIONAL ROAD AUTHORITY SPECIFICATION FOR ROAD WORKS. OTHERWISE CLASS 8/4 MAY BE USED. ALTERNATIVE BACKFILL MATERIAL TO THAT DESCRIBED ABOVE (CLASS 8/4 OR CLASS 8/6) OF THE PIPE TRENCH WILL ONLY BE ALLOWED BY IRISH WATER WHERE THE ROAD AUTHORITY HAS GIVEN ITS CONSENT. THE DEPTH OF COVER TO BE USED SHALL BE APPROVED BY IRISH WATER
- SUBJECT TO APPROVAL BY IRISH WATER, GRAVEL OR GRANULAR PIPE SURROUND MATERIAL, SUBJECT TO REVIEW BY IRISH WATER
- PIPE BEDDING SHALL BE CLASS 8/4 OR GRANULAR MATERIAL SHALL BE 100mm TO 200mm (2.0" TO 8.0") GRADE ACCORDANCE TO BS 2013
- IN SOFT GROUND CONDITIONS (BS 5185) THE MATERIAL SHOULD BE EXCAVATED OUT AND DISPOSED OF IN ACCORDANCE WITH THE WASTE MANAGEMENT ACT AND CLASS 8/4 (B) MATERIAL IN ACCORDANCE WITH THE NATIONAL ROAD AUTHORITY SPECIFICATION FOR ROAD WORKS SHALL BE USED. UNLESS OTHERWISE SPECIFIED, UNDESIGNED ORIGINAL GROUND SUPPORT ARRANGEMENTS, INCLUDING PLATE ETC. MAY BE REQUIRED WHERE THE DEPTH OF SOFT MATERIAL IS EXCESSIVE. SUCH ARRANGEMENTS SHALL BE SUBJECT TO ASSESSMENT BY IRISH WATER BEFORE COMMENCING THE WORK
- PIPE SHALL NOT BE SUPPORTED ON STONES OR ROCKS OR ANY HARD OBJECT AT ANY POINT ALONG THE TRENCH. ROCK SHALL BE EXCAVATED TO A DEPTH OF 150mm BELOW THE ACTUAL DEPTH OF THE TRENCH WITH THE VOID FILLED WITH CLASS 8/4 BACKFILL IN ACCORDANCE WITH THE NATIONAL ROAD AUTHORITY SPECIFICATION FOR ROAD WORKS. THE GRANULAR MATERIAL SHALL BE Laid ABOVE THIS VOID BACKFILL MATERIAL
- SHOULD MARKER COVER NOT BE AVAILABLE, CONCRETE GRADE C20/25 SHALL BE USED AS BACKFILL MATERIAL
- MARKER TAPE TO BE 100mm WIDE BLUE POLYETHYLENE MATERIAL IN ACCORDANCE WITH BS 2714. PLASTIC PIPES SHALL HAVE WARNING TAPE INCORPORATED A REINFORCED BRASS BRANDING WIRE SERVICE PIPES SHALL HAVE 200mm WIDE YELLOW MARKER TAPE TO BE Laid AT TOP OF PIPE BEDDING LAYER
- TRENCH WIDTH FOR PIPE SIZES 400mm MAY BE 400mm. SUBJECT TO CONSIDERATION BEING GIVEN TO THE TRENCH DEPTH, HEALTH & SAFETY & CONSTRUCTION ACCESS REQUIREMENTS
- TRENCH BENCH CONSTRUCTION & SURFACE FINISH TO BE TO ROAD AUTHORITY REQUIREMENTS
- EXISTING ROAD REINFORCEMENT TO COMPLY WITH CURRENT VERSION OF "GUIDELINES FOR MANAGING OPENINGS IN PUBLIC ROADS" BY THE DEPT. OF TRANSPORT, TOURISM & SPORT OR TRANSPORT MANUFACTURE RELIANCE REQUIREMENTS



TYPICAL IRISH WATER DETAIL FOR MARKER POSTS / PLATES - NTS



TYPICAL IRISH WATER DETAIL FOR BACKFILL AND BEDDING - NTS



NOM. DIA. (mm)	DIMENSIONS									
	A	B	C	D	E	F	G	H	J	K
100	600	330	160	80	200	350	390	700	600	400
150	950	510	260	130	225	450	660	900	750	600
200	1150	600	310	160	300	650	790	1050	900	700
250	1350	750	380	200	300	800	970	1200	1000	750
300	1580	850	450	220	320	950	1110	1300	1100	850
350	2100	1150	570	290	450	1000	1450	1550	1200	900
400	2550	1400	700	350	500	1050	1800	1700	1250	1000
450	3000	1630	830	420	680	1100	2130	1800	1450	1150
500	3590	1950	990	500	800	1200	2540	1950	1600	1250
600	4100	2200	1120	570	850	1400	2880	2100	1700	1300

NOM. DIA. (mm)	DIMENSIONS									
	A	B	C	D	E	F	G	H	J	K
100	700	380	190	100	200	350	510	750	600	400
150	1135	620	320	160	225	450	760	950	750	600
200	1400	750	380	190	300	650	980	1150	950	700
250	1730	940	480	240	320	800	1210	1350	1050	850
300	2090	1130	580	300	380	950	1480	1500	1200	950
350	2600	1410	720	360	500	1050	1840	1700	1350	1050
400	2980	1610	820	420	750	1200	2110	1850	1500	1150
450	3400	1840	940	470	900	1300	2330	2000	1600	1250
500	4090	2210	1130	570	1000	1400	2890	2200	1750	1350
600	5010*	2710*	1380	700	1000	1500	3550*	2350	1900	1500

TABLE OF DIMENSIONS FOR STEEPLY INCLINED PIPELINES	
GRADIENT	SPACING
1 IN 2 & STEEPER	5.5m
BELOW 1 IN 2 TO 1 IN 4	11.0m
1 IN 4 TO 1 IN 5	16.6m
1 IN 5 TO 1 IN 6	22.0m

PLANNING ISSUE

S2 P01	ISSUED FOR PLANNING	08.12.2022	KD	AL
Rev.	Note	Date	Drawn	Check

DONNACHADH O'BRIEN
& ASSOCIATES CONSULTING ENGINEERS

UNIT 5C
ELM HOUSE
MILLENNIUM PARK
NAAS
CO. KILDARE

PHONE
+353 45 984 042

INFO@DOBRIEN-ENGINEERS.IE
WWW.DOBRIEN-ENGINEERS.IE

Client: WESTAR HOMES LTD

Project: FINLAY PARK

Drawing Title: TYPICAL WATERMAIN DETAILS SHEET 3 OF 3

Drawn By: RR	Checked By: AL	Approved By: DOB	Date: SEP 2022	Scale: NTS	Sheet Size: A1
Project Number: DOBA2110	Drawing Number: FINLAY-DOB- XX-SI- DR-C-0132	Status Code: S2	Rev Number: P01		

TYPICAL IRISH WATER DETAIL FOR WATER MAIN THRUST AND SUPPORT BLOCKS - NTS