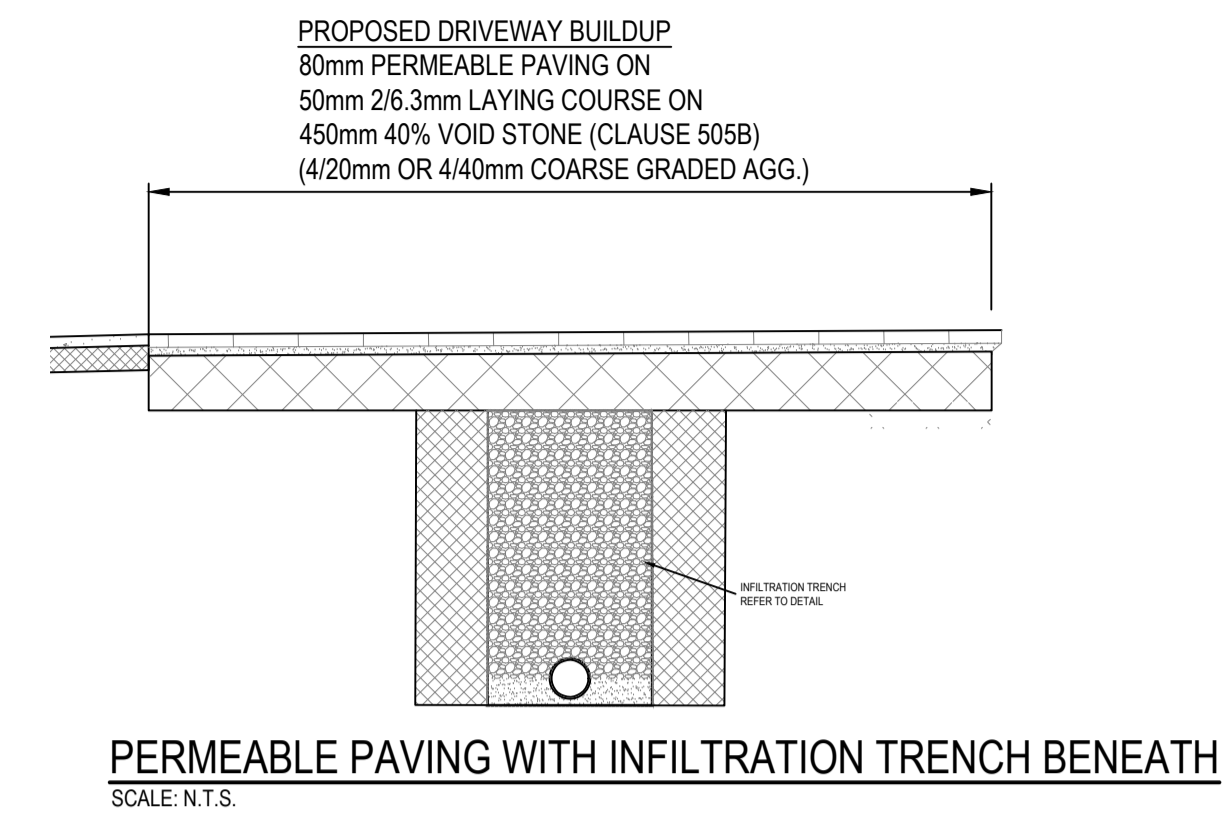


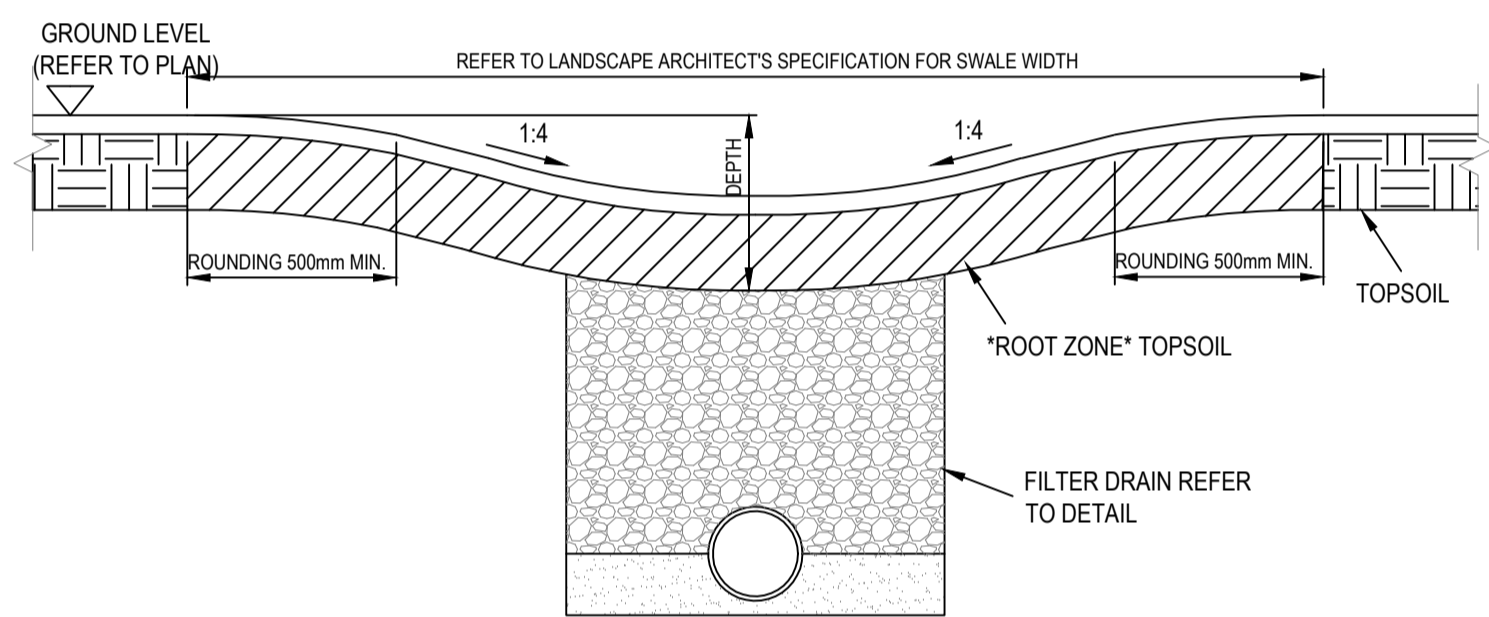
BIO RETENTION POND WITH INFILTRATION TRENCH ATTENUATION SYSTEM ARRANGEMENT
N.T.S.



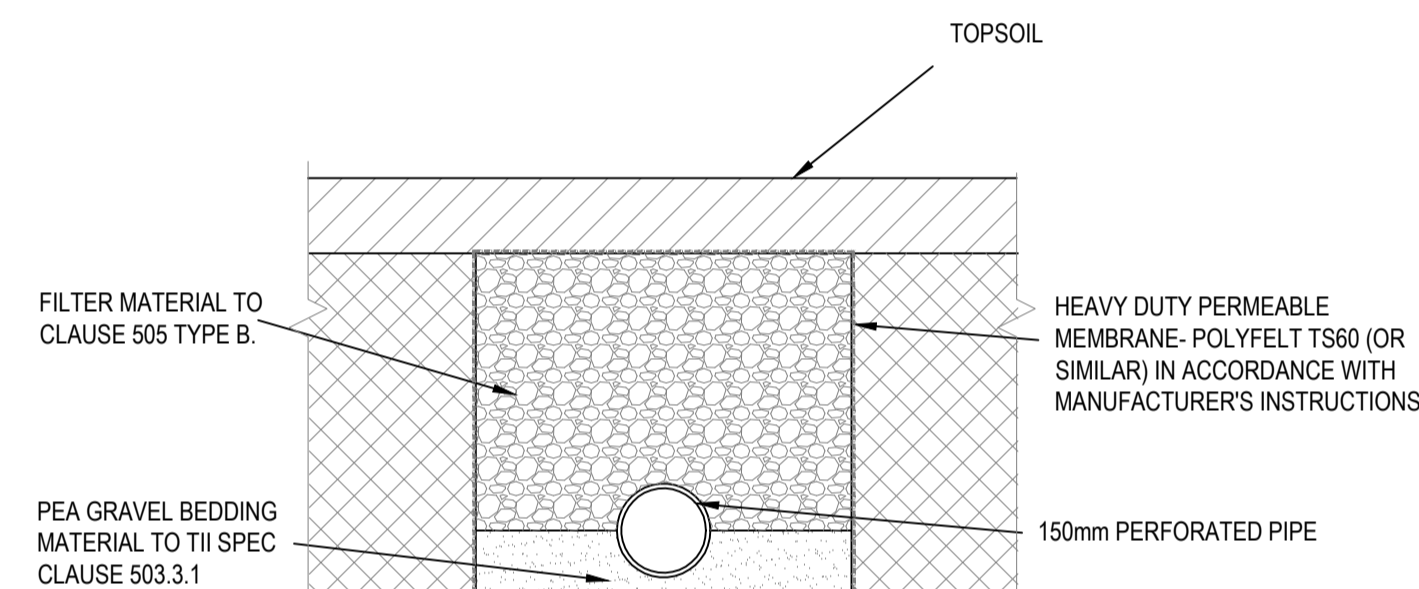
PERMEABLE PAVING WITH INFILTRATION TRENCH BENEATH
SCALE: N.T.S.

NOTES:

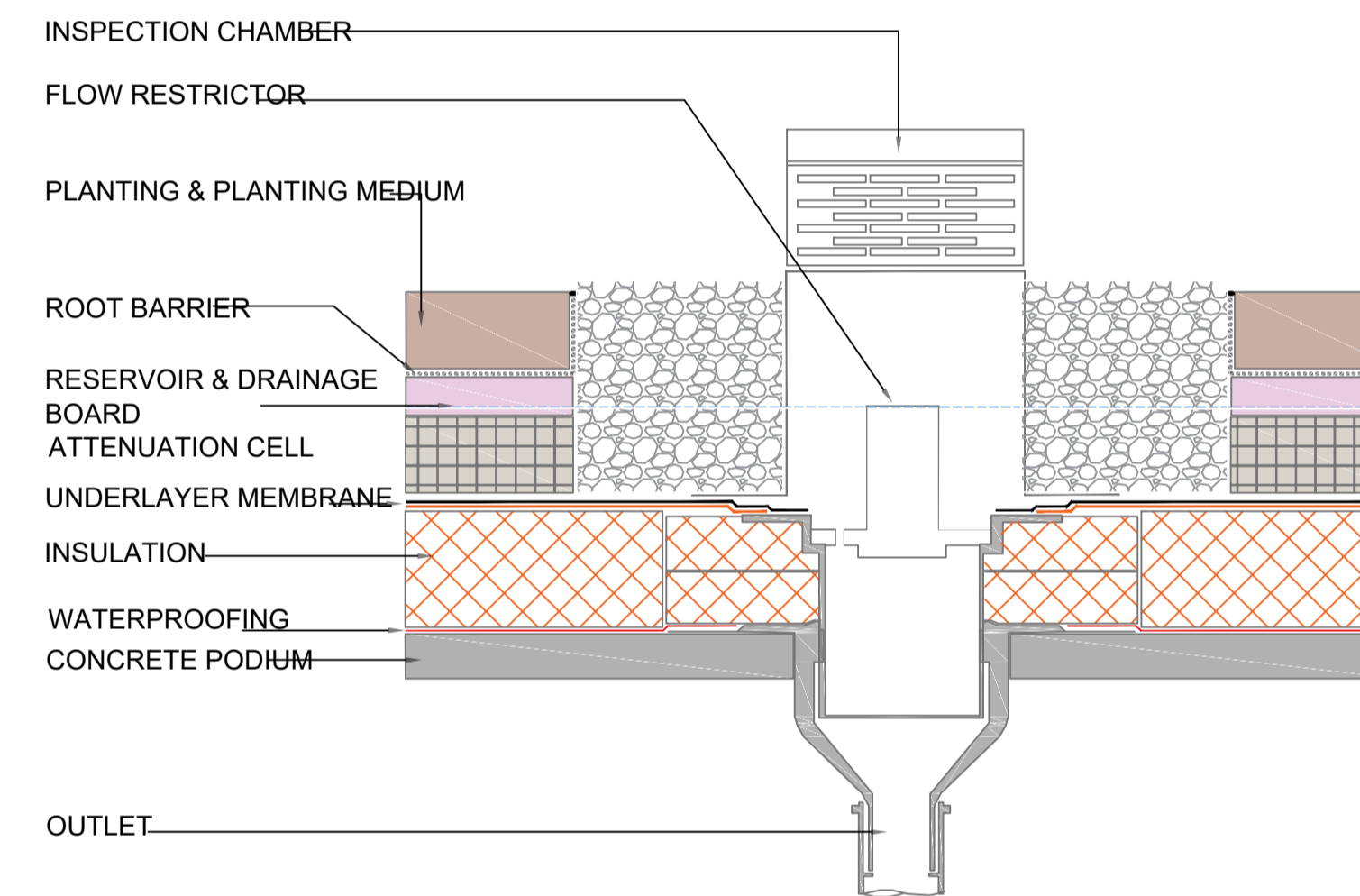
- FOR STANDARD DOBA NOTES REFER TO DRAWING 2110-S00.1 & S00.2
- REFER TO ARCHITECTS DRAWINGS FOR ALL SITE & APPLICATION BOUNDARIES
- THIS DRAWING IS TO BE READ IN CONJUNCTION WITH ALL OTHER RELEVANT ENGINEER'S DRAWINGS AND SPECIFICATIONS
- USE FIGURED DIMENSIONS ONLY. DO NOT SCALE
- REFER TO SURVEY DRAWINGS FOR EXISTING SERVICES LAYOUTS AND MANHOLE INFORMATION
- ALL EXISTING SURFACES TO BE REINSTATED FOLLOWING DIVERSION OF SERVICES/CONSTRUCTION OF NEW SERVICES
- THE CONTRACTOR SHALL VERIFY ALL DIMENSIONS AND LEVELS WITH ENGINEERING & SURVEY DRAWINGS PRIOR TO START OF CONSTRUCTION. ANY DISCREPANCIES TO BE NOTIFIED TO THE ENGINEER & ARCHITECT FOR RESOLUTION
- CONTRACTOR TO ENSURE ALL WATER & WASTEWATER RELATED WORKS ARE IN ACCORDANCE WITH THE IRISH WATER WATER INFRASTRUCTURE & WASTEWATER INFRASTRUCTURE CODE OF PRACTICE & STANDARD DETAILS DOCUMENTS
- TESTING OF ALL GRAVITY SEWERS AND MANHOLES TO BE IN ACCORDANCE WITH IRISH WATER CODE OF PRACTICE FOR WASTEWATER INFRASTRUCTURE SECTION 4.10 TESTING OF GRAVITY SEWERS & MANHOLES
- THE SURVEY INFORMATION IN THIS DRAWING IS PROVIDED BY A THIRD PARTY. DONNACHADH O'BRIEN & ASSOCIATES CONSULTING ENGINEER LTD HAVE NOT VERIFIED THE ACCURACY OF THE SURVEY AND IS PRESENTED HEREON FOR INFORMATION PURPOSES ONLY. CONTRACTOR TO CARRY OUT SPLIT TRENCHES TO CONFIRM THE EXACT LOCATION OF ALL EXISTING UNDERGROUND SERVICES. ANY DISCREPANCIES WITH THE SURVEY INFORMATION TO BE NOTIFIED TO THE ENGINEER FOR RESOLUTION
- CONTRACTOR TO ALLOW FOR REROUTING & TEMPORARILY SUPPORTING EXISTING SERVICES ENCOUNTERED DURING THE WORKS
- CONTRACTOR TO LAISE WITH ALL RELEVANT LOCAL AUTHORITIES & UTILITY PROVIDERS WITH REGARD TO TEMPORARY DIVERSIONS, SERVICES DISRUPTIONS & PHASING.
- ALL GRANULAR MATERIAL USED FOR BACKFILL UNDER ROADS AND FOOTPATHS TO HAVE A CERTIFICATE OF COMPLIANCE (DESIGN) CONFIRMING COMPLIANCE WITH ANNEX E OF SR21 IN ACCORDANCE WITH THE BUILDING CONTROL (AMENDMENT) REGULATIONS 2014 (MINIMUM 3 TESTS)
- ALL EXCAVATED MATERIAL TO BE DISPOSED OFF SITE TO A SUITABLE LICENSED FACILITY
- CONTRACTOR RESPONSIBLE FOR ROAD OPENING LICENSES & APPROVALS, TEMPORARY TRAFFIC MANAGEMENT, H&S FOR ROAD CROSSINGS



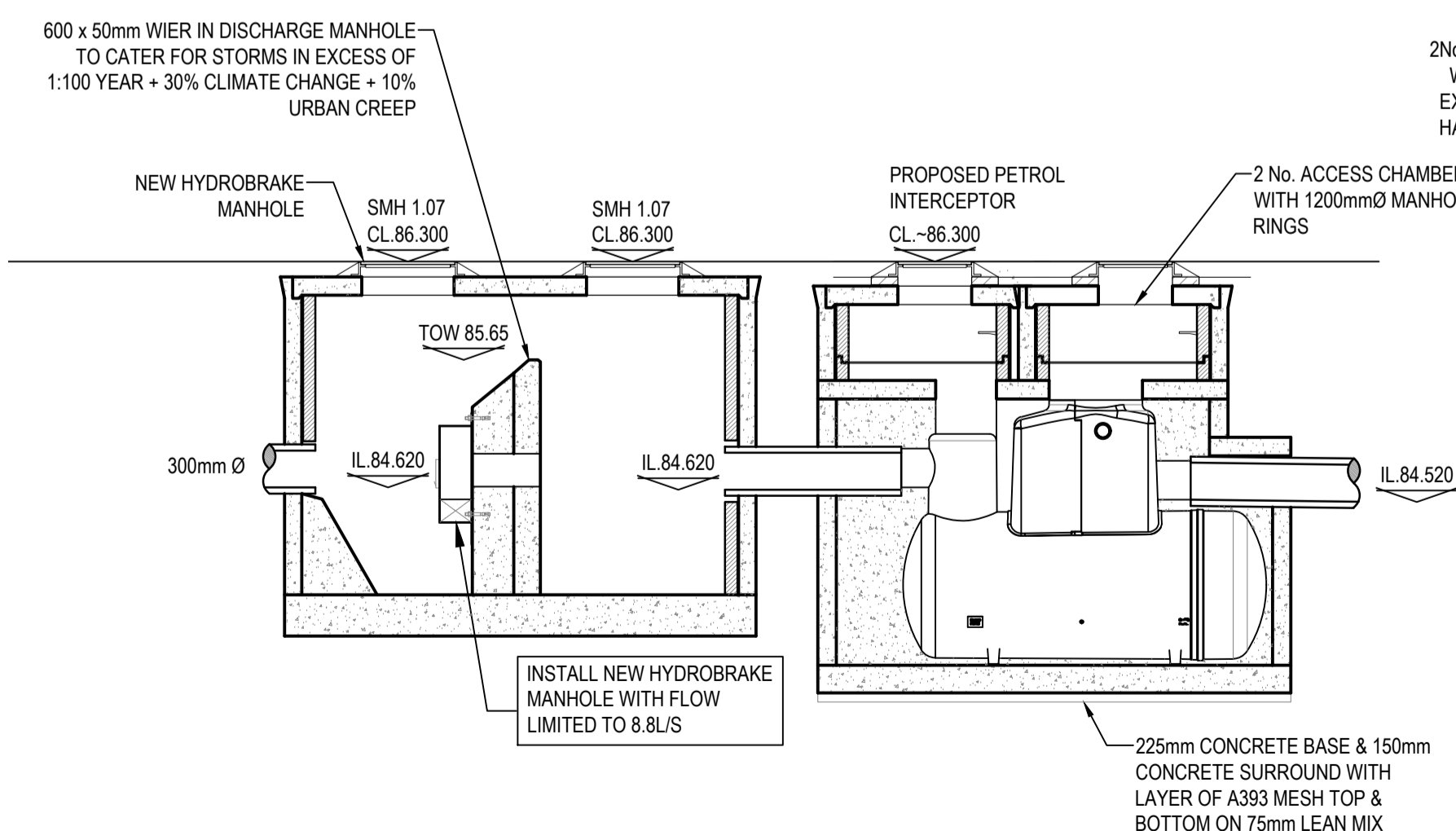
TYPICAL DETAIL OF DRY SWALE/INFILTRATION TRENCH
SCALE: 1:20



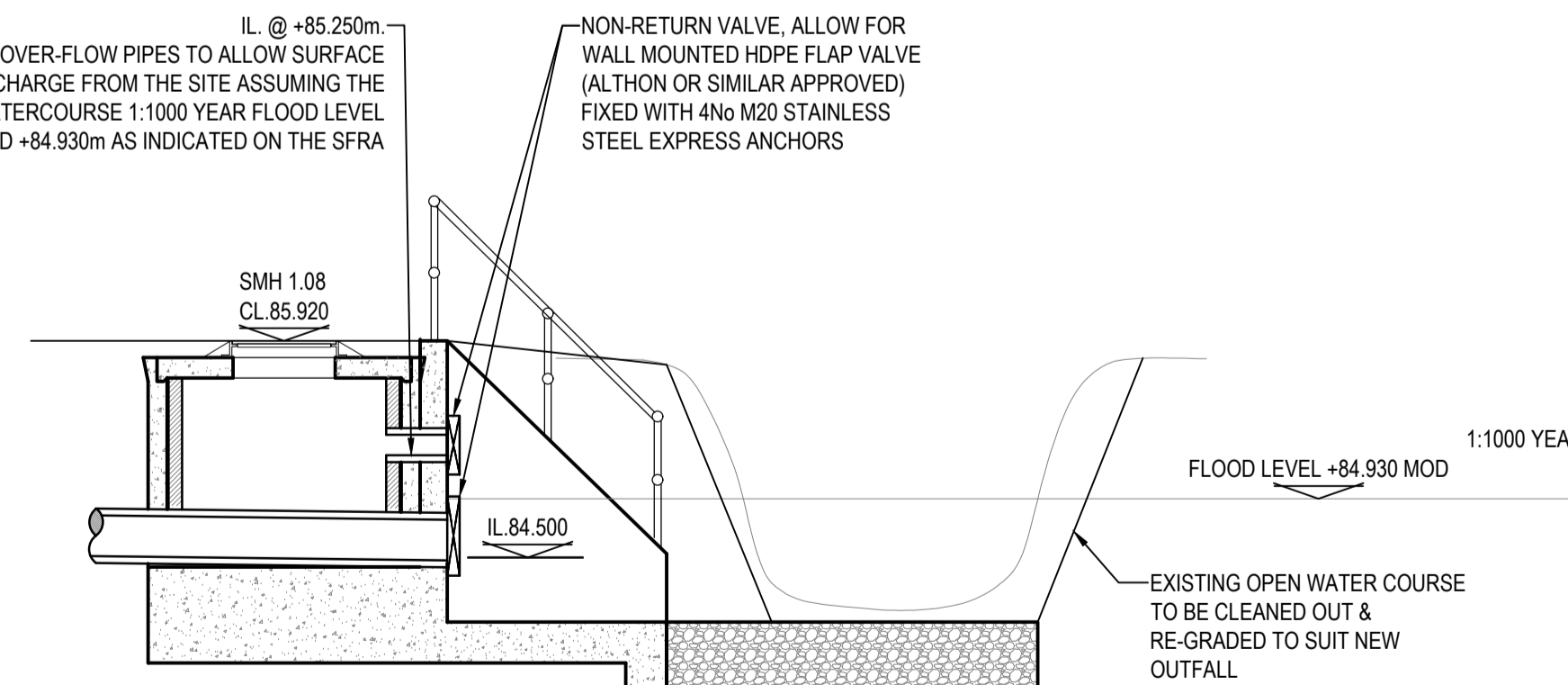
TYPICAL DETAIL OF INFILTRATION TRENCH
SCALE: 1:20



INDICATIVE SECTION THROUGH PODIUM ATTENUATION SYSTEM
Scale N.T.S.



PROPOSED SECTION THRU' NEW STORM HYDROBRAKE MANHOLE / STORM MANHOLE / PETROL INTERCEPTOR / STORM MANHOLE / HEADWALL
SCALE 1:50



PLANNING ISSUE

S2.P01	ISSUED FOR PLANNING	08.12.2022	KD	AL
Rev.	Note	Date	Drawn	Check

DONNACHADH O'BRIEN & ASSOCIATES CONSULTING ENGINEERS

UNIT 5C
ELM HOUSE
MILLENNIUM PARK
NAAS
CO. KILDARE

PHONE
+353 45 984 042

INFO@DOBRIEN-ENGINEERS.IE
WWW.DOBRIEN-ENGINEERS.IE

Client: WESTAR HOMES LTD.

Project: FINLAY PARK

Drawing Title: PROPOSED ATTENUATION AND SUDS DETAILS

Drawn By: JM	Checked By: AL	Approved By: DOB	Date: MARCH '21	Scale: AS SHOWN	Sheet Size: A1
Project Number: DOBA2110	Drawing Number: FINLAY-DOB-XX-SI- DR-C-0110	Status Code: S2	Rev Number: P01		