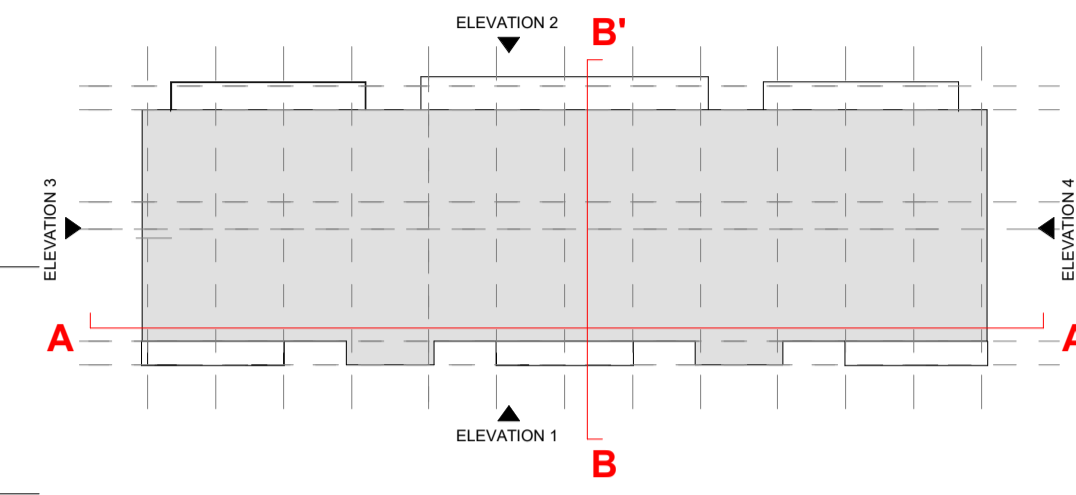


DESIGN INTENT DRAWING



1 Elevation 1 - Part V
1:100



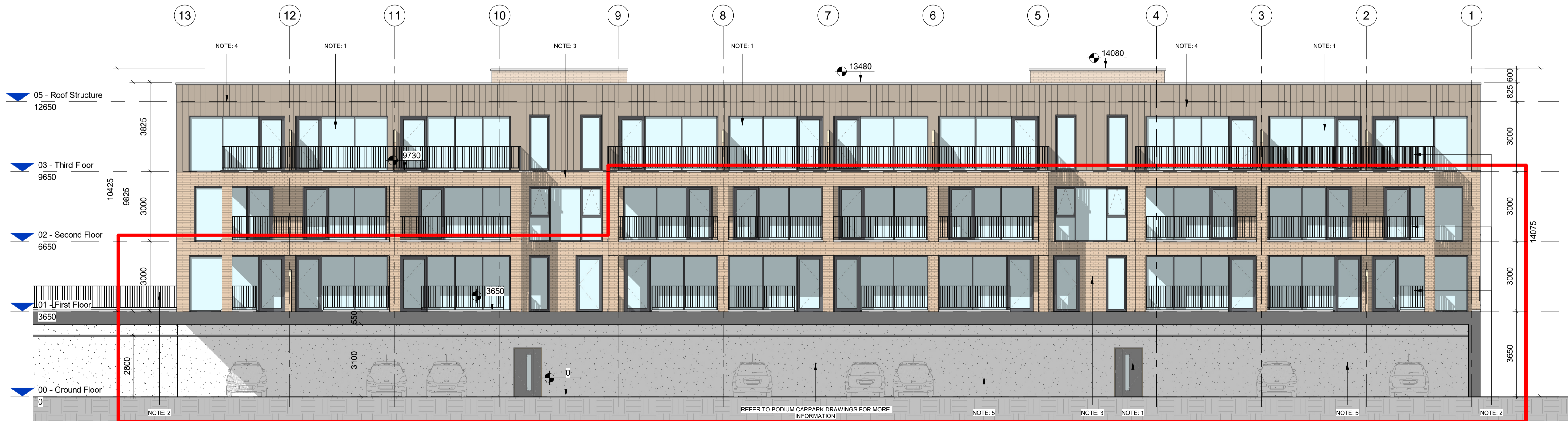
MATERIAL LIST:

- NOTE 1: PROPOSED FINISH: POWDER-COATED ALUMINIUM/PVC FRAMED WINDOWS/DOORS
- NOTE 2: PROPOSED FINISH: METAL RAILINGS
- NOTE 3: PROPOSED FINISH: SELECTED LIGHT BROWN / OFF-CREAM BRICKWORK
- NOTE 4: PROPOSED FINISH: SELECTED DARK METAL CLADDING
- NOTE 5: PROPOSED FINISH: SELECTED OFF-WHITE COLOURED RENDER
- NOTE 6: PROPOSED FINISH: SELECTED OFF-WHITE EMBOSSED BRICKWORK

PART V

UNITS FOR PART V COMPLIANCE:

- (08) 2 BED DUPLEX APARTMENT
- (02) 3 BED DUPLEX APARTMENT
- (05) 1 BED APARTMENT



2 Elevation 2 - Part V
1:100

P01	06/12/2022	Planning Issue	
Rev	Date	Description	Issued By

Project Stage
Planning

Client:
Westar Homes Limited

Project:
Residential @ Finlay Park
Finlay Park, Naas, Co. Kildare

Drawing Title:
Zone 1 - Duplex Block A - Elevations - Part V

Drawn	Checked	Paper Size	Scale	Date
VM	BB	A1	As indicated	06/12/2022

Project No.	Drawing No.	Classification	Revision
PE17019	2032		P01

File Name:
PE17019-CWO-01-ZZ-DR-A-2032

Status:
Suitable for planning