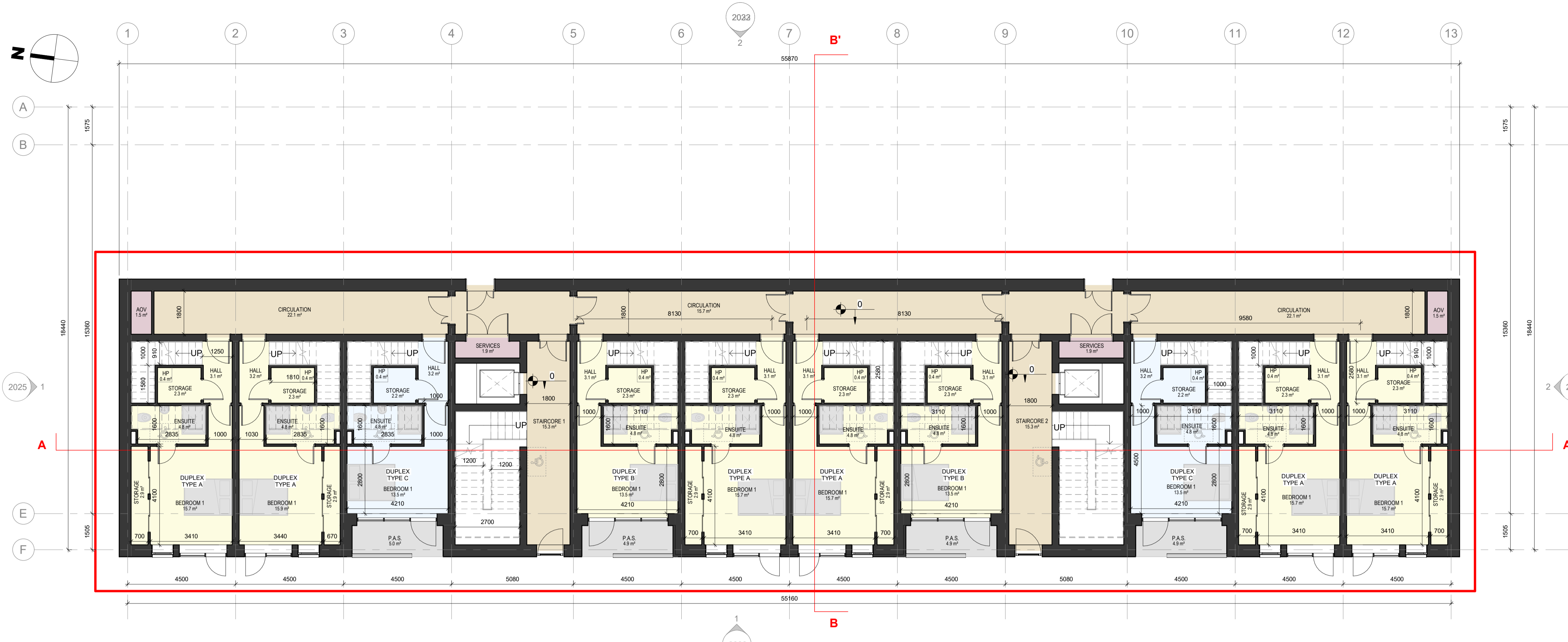
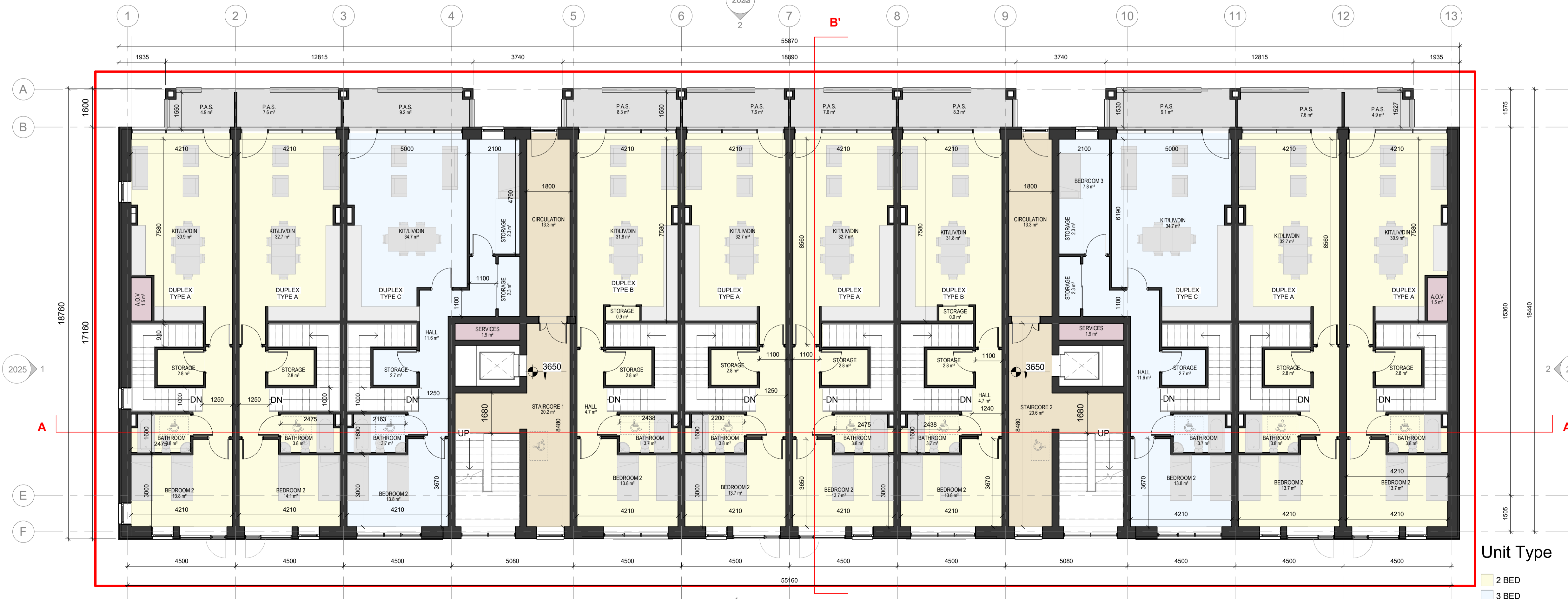


DESIGN INTENT DRAWING



1 Ground Floor
1:100



2 First Floor
1:100

PART V

- UNITS FOR PART V COMPLIANCE:
- (08) 2 BED DUPLEX APARTMENT
 - (02) 3 BED DUPLEX APARTMENT

Rev	Date	Description	Issued By
P01	06/12/2022	Planning Issue	

Project Stage
Planning

Client:
Westar Homes Limited

Project:
Residential @ Finlay Park
Finlay Park, Naas, Co. Kildare

Drawing Title:
Zone 1 - Duplex Block A - GF & 1st Floor - Part V

Drawn	Checked	Paper Size	Scale	Date
VM	BB	A1	As indicated	06/12/2022

Project No. PE17019
Drawing No. 2030
Classification
Revision P01

File Name: PE17019-CWO-01-ZZ-DR-A-2030
Status: Suitable for planning

- Unit Type**
- 2 BED
 - 3 BED
 - CIRCULATION
 - P.A.S.
 - SERVICES



No. 1 Sarsfield Quay, Dublin 7, D07 R9FH
t: 01 518 0170 e: admin@cwoarchitects.ie
Dublin | Cork | Galway | London | UK & Europe +
www.cwoarchitects.ie

Please consider the environment before printing this sheet