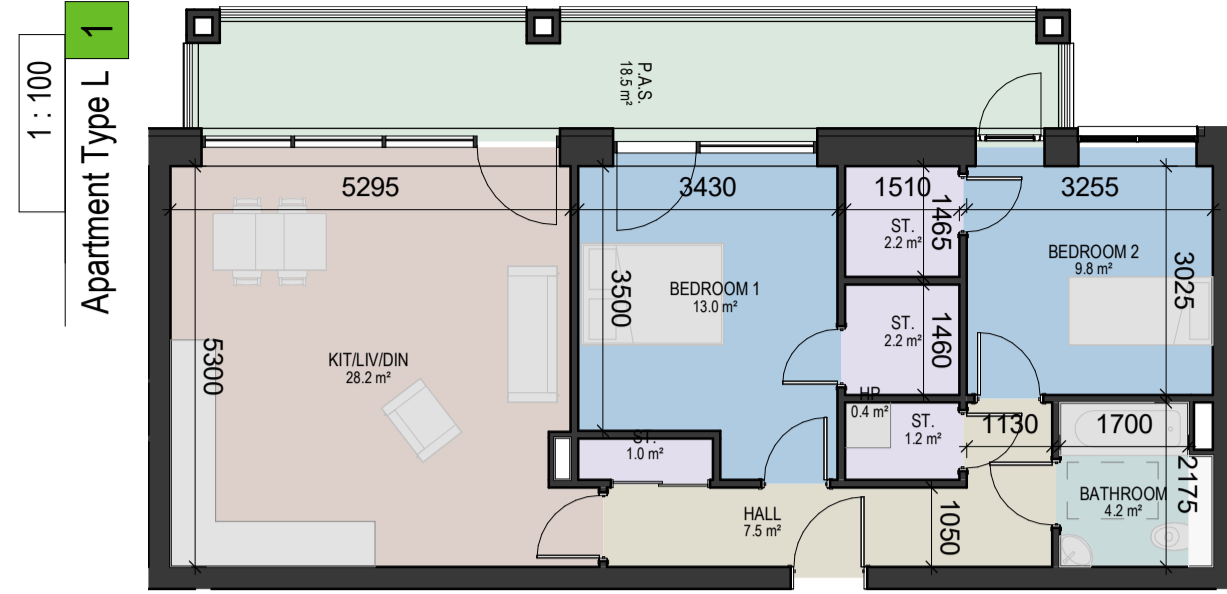
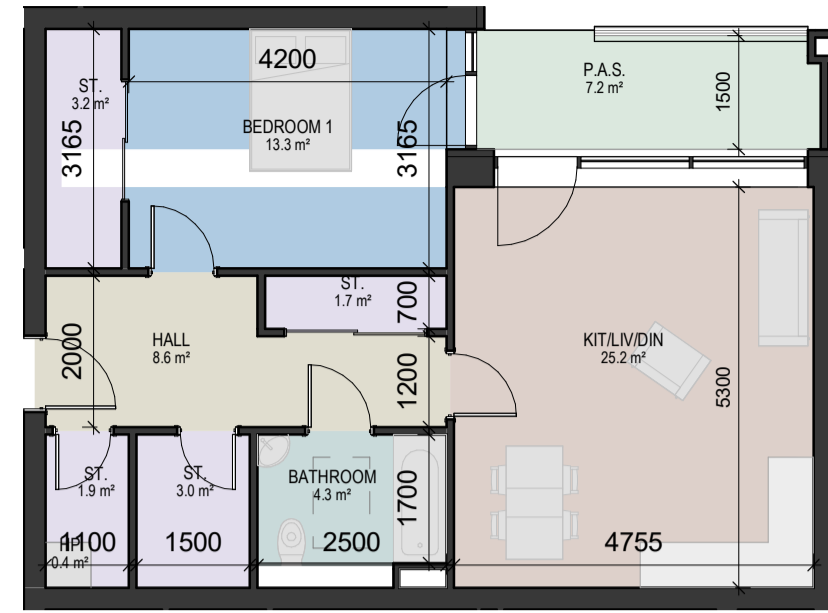


DESIGN INTENT DRAWING



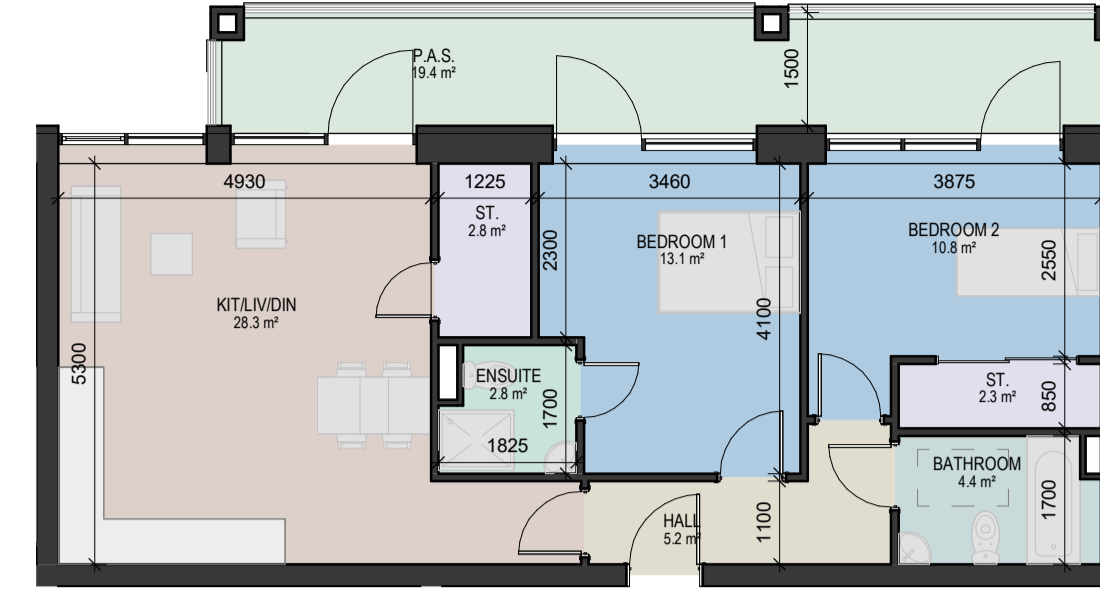
APARTMENT TYPE L - 2 BEDS - 3 PERSON					
Gross Area	Min. Area (m ²)		Proposed Area (m ²)		Aspect
	63	73	Single Aspect		
Room	Min. Width (mm)	Proposed Width (mm)	Min. Area (m ²)	Proposed Area (m ²)	
Aggregate Living Area	3600	5295	28	28.2	
Bedroom 1	2800	3430	13	13	
Bedroom 2	2100	3255	7.1	9.8	
Storage			5	6.6	
P.A.S			6	18.5	

* PRIVATE AMENITY SPACE VARIES DUE TO ELEVATIONAL TREATMENT THROUGHOUT THE SCHEME. ALL P.A.S TO MEET OR EXCEED THE MINIMUM STANDARD OF 9m² AND 1500mm MIN. DEEP FOR 3 BED UNITS.



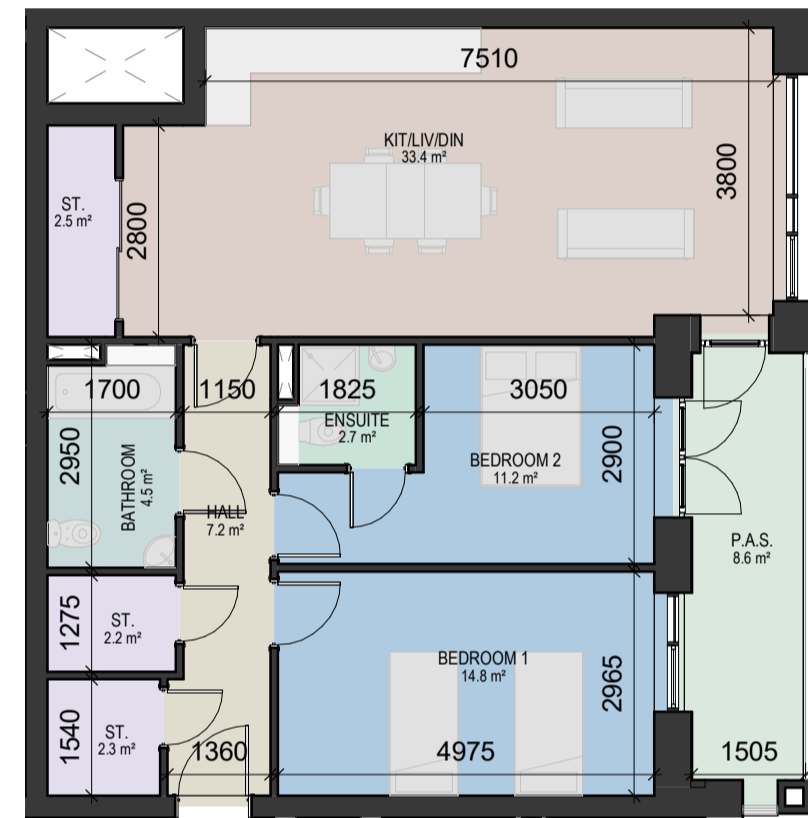
APARTMENT TYPE M - 1 BED					
Gross Area	Min. Area (m ²)		Proposed Area (m ²)		Aspect
	45	65	Dual Aspect		
Room	Min. Width (mm)	Proposed Width (mm)	Min. Area (m ²)	Proposed Area (m ²)	
Aggregate Living Area	3300	4756	23	25.2	
Bedroom 1	2800	3165	11.4	13.3	
Storage			3	9.8	
P.A.S			5	7.2	

* PRIVATE AMENITY SPACE VARIES DUE TO ELEVATIONAL TREATMENT THROUGHOUT THE SCHEME. ALL P.A.S TO MEET OR EXCEED THE MINIMUM STANDARD OF 9m² AND 1500mm MIN. DEEP FOR 1 BED UNIT



APARTMENT TYPE N - 2 BEDS - 3 PERSON					
Gross Area	Min. Area (m ²)		Proposed Area (m ²)		Aspect
	63	73	Single Aspect		
Room	Min. Width (mm)	Proposed Width (mm)	Min. Area (m ²)	Proposed Area (m ²)	
Aggregate Living Area	3600	4930	28	28.3	
Bedroom 1	2800	3460	13	13.1	
Bedroom 2	2100	3875	7.1	10.8	
Storage			5	5.7	
P.A.S			6	19.4	

* PRIVATE AMENITY SPACE VARIES DUE TO ELEVATIONAL TREATMENT THROUGHOUT THE SCHEME. ALL P.A.S TO MEET OR EXCEED THE MINIMUM STANDARD OF 6m² AND 1500mm MIN. DEEP FOR 2 BED UNITS - 3 PERSON



4 Apartment Type O

1:100

APARTMENT TYPE O - 2 BEDS - 4 PERSON					
Gross Area	Min. Area (m ²)		Proposed Area (m ²)		Aspect
	73	85	Dual Aspect		
Room	Min. Width (mm)	Proposed Width (mm)	Min. Area (m ²)	Proposed Area (m ²)	
Aggregate Living Area	3600	3901	30	33.4	
Bedroom 1	2800	3630	13	14.4	
Bedroom 2	2800	3284	11.4	11.5	
Storage			6	6.6	
P.A.S			7	8.7	

* PRIVATE AMENITY SPACE VARIES DUE TO ELEVATIONAL TREATMENT THROUGHOUT THE SCHEME. ALL P.A.S TO MEET OR EXCEED THE MINIMUM STANDARD OF 7m² AND 1500mm MIN. DEEP FOR 2 BED UNITS - 4 PERSON



5 Apartment Type P

1:100

APARTMENT TYPE P - 3 BEDS					
Gross Area	Min. Area (m ²)		Proposed Area (m ²)		Aspect
	90	98	Dual Aspect		
Room	Min. Width (mm)	Proposed Width (mm)	Min. Area (m ²)	Proposed Area (m ²)	
Aggregate Living Area	3800	6930	34	34.4	
Bedroom 1	2800	3320	13	15.2	
Bedroom 2	2100	2890	7.1	7.4	
Bedroom 3	2800	2800	11.4	12	
Storage			9	9	
P.A.S			9	11	

* PRIVATE AMENITY SPACE VARIES DUE TO ELEVATIONAL TREATMENT THROUGHOUT THE SCHEME. ALL P.A.S TO MEET OR EXCEED THE MINIMUM STANDARD OF 9m² AND 1500mm MIN. DEEP FOR 3 BED UNITS.

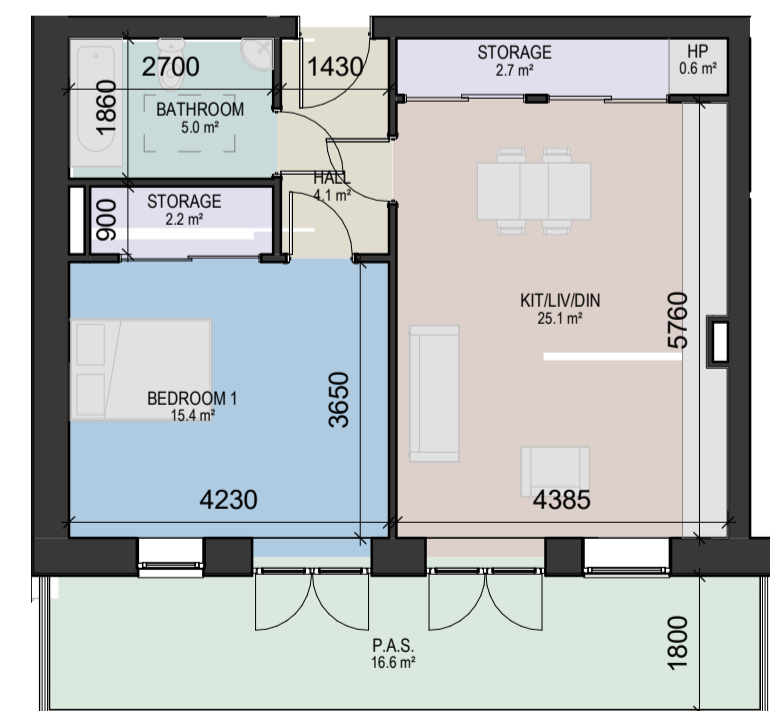


7 Apartment Type Q

1:100

APARTMENT TYPE Q,1 - 2 BEDS - 4 PERSON					
Gross Area	Min. Area (m ²)		Proposed Area (m ²)		Aspect
	73	91	Dual Aspect		
Room	Min. Width (mm)	Proposed Width (mm)	Min. Area (m ²)	Proposed Area (m ²)	
Aggregate Living Area	3600	4904	30	30.9	
Bedroom 1	2800	4210	13	17.6	
Bedroom 2	2800	3015	11.4	14	
Storage			6	6.5	
P.A.S			7	13.4	

* PRIVATE AMENITY SPACE VARIES DUE TO ELEVATIONAL TREATMENT THROUGHOUT THE SCHEME. ALL P.A.S TO MEET OR EXCEED THE MINIMUM STANDARD OF 7m² AND 1500mm MIN. DEEP FOR 2 BED UNITS - 4 PERSON

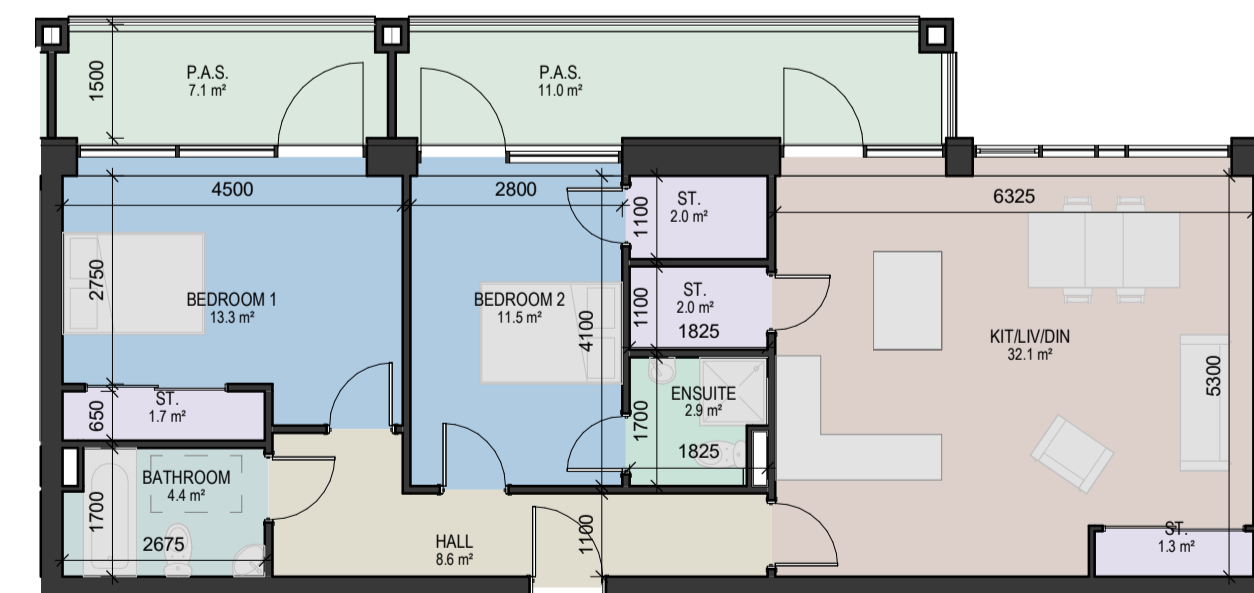


8 Apartment Type T

1:100

APARTMENT TYPE T - 1 BED					
Gross Area	Min. Area (m ²)		Proposed Area (m ²)		Aspect
	45	58	Single aspect		
Room	Min. Width (mm)	Proposed Width (mm)	Min. Area (m ²)	Proposed Area (m ²)	
Aggregate Living Area	3300	4385	23	25.1	
Bedroom 1	2800	4230	11.4	15.4	
Storage			3	4.9	
P.A.S			5	16.6	

* PRIVATE AMENITY SPACE VARIES DUE TO ELEVATIONAL TREATMENT THROUGHOUT THE SCHEME. ALL P.A.S TO MEET OR EXCEED THE MINIMUM STANDARD OF 5m² AND 1500mm MIN. DEEP FOR 1 BED UNIT

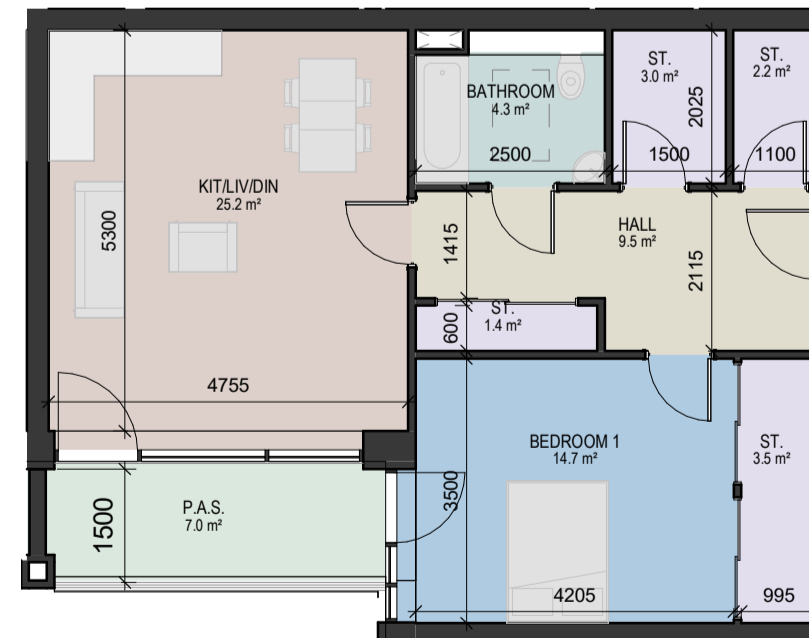


9 Apartment Type U

1:100

APARTMENT TYPE U - 2 BEDS - 4 PERSON					
Gross Area	Min. Area (m ²)		Proposed Area (m ²)		Aspect
	73	83	Single Aspect		
Room	Min. Width (mm)	Proposed Width (mm)	Min. Area (m ²)	Proposed Area (m ²)	
Aggregate Living Area	3600	6325	30	32.1	
Bedroom 1	2800	4500	13	13.3	
Bedroom 2	2800	2800	11.4	11.5	
Storage			6	7	
P.A.S			7	18.1	

* PRIVATE AMENITY SPACE VARIES DUE TO ELEVATIONAL TREATMENT THROUGHOUT THE SCHEME. ALL P.A.S TO MEET OR EXCEED THE MINIMUM STANDARD OF 7m² AND 1500mm MIN. DEEP FOR 2 BED UNITS - 4 PERSON



10 Apartment Type V

1:100

APARTMENT TYPE V - 1 BED					
Gross Area	Min. Area (m ²)		Proposed Area (m ²)		Aspect
	45	67	Dual aspect		
Room	Min. Width (mm)	Proposed Width (mm)	Min. Area (m ²)	Proposed Area (m ²)	
Aggregate Living Area	3300	4755	23	25.2	
Bedroom 1	2800	3500	11.4	14.7	
Storage			3	10.1	
P.A.S			5	7	

* PRIVATE AMENITY SPACE VARIES DUE TO ELEVATIONAL TREATMENT THROUGHOUT THE SCHEME. ALL P.A.S TO MEET OR EXCEED THE MINIMUM STANDARD OF 5m² AND 1500mm MIN. DEEP FOR 1 BED UNIT

Room Type

- BATHROOM
- BEDROOM 1
- BEDROOM 2
- BEDROOM 3
- ENSUITE
- HALL
- HP
- KIT/LIV/DIN
- P.A.S.
- STORAGE

Rev	Date	Description	Issued By
P01	06/12/2022	Planning Issue	

Project Stage

PLANNING

Client:

Westar Homes Limited

Project:

Residential @ Finlay Park
Finlay Park, Naas, Co. Kildare

Drawing Title:

Apartment Types O2

Drawn	Checked	Paper Size	Scale	Date
VM	BB	A1	1:100@A1	06/12/2022

Project No.	Drawing No.	Classification	Revision
PE17019	6201		P01

File Name
PE17019-CWO-01-ZZ-DR-A-6201

Status:

Suitable for planning



No.1 Sarsfield Quay, Dublin 7, D07 R9FH
t: 01 518 0170 e: admin@cwoarchitects.ie
Dublin | Cork | Galway | London | UK & Europe +
www.cwoarchitects.ie

Please consider the environment before printing this sheet