

DESIGN INTENT DRAWING

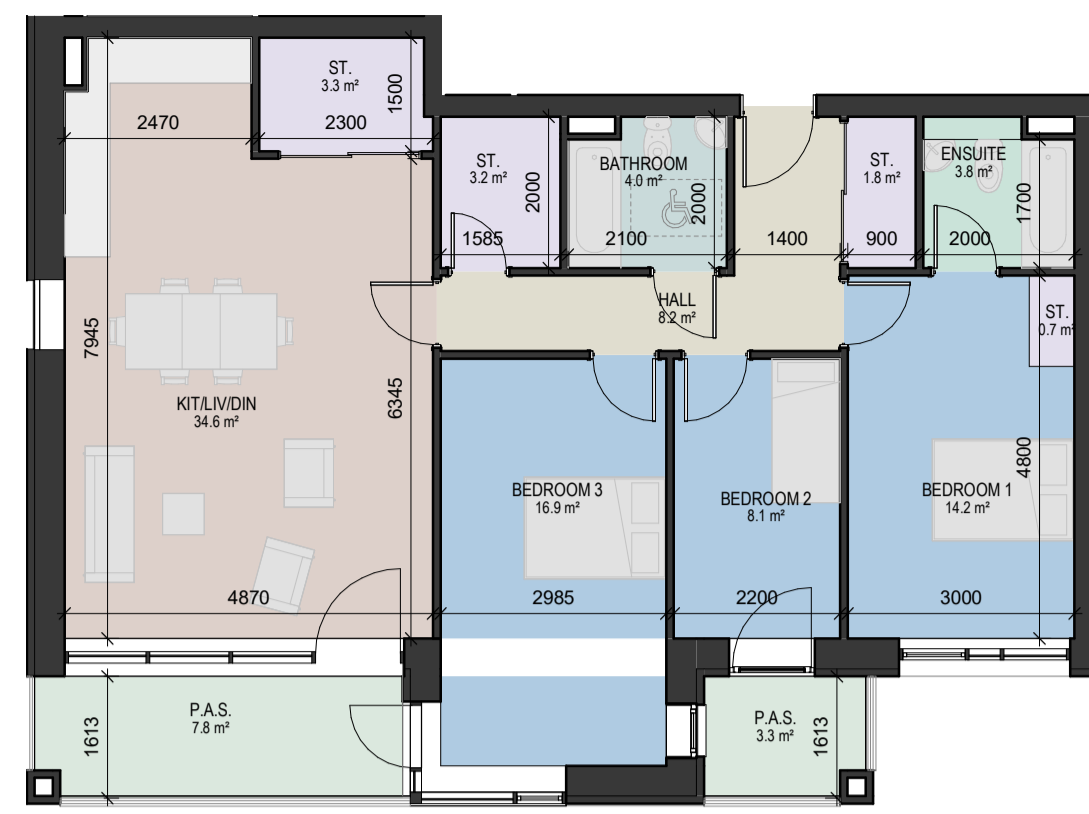


1 Apartment Type A

1: 100

APARTMENT TYPE A - 3 BEDS				
	Min. Area (m ²)	Proposed Area (m ²)	Aspect	
Gross Area	90	97	Dual Aspect	
Room	Min. Width (mm)	Proposed Width (mm)	Min. Area (m ²)	Proposed Area
Aggregate Living Area	3800	4870	34	33.9
Bedroom 1	2800	3000	13	13.8
Bedroom 2	2100	2100	7.1	7.8
Bedroom 3	2800	3085	11.4	11.9
Storage			9	9.6
P.A.S			9	17

* PRIVATE AMENITY SPACE VARIES DUE TO ELEVATIONAL TREATMENT THROUGHOUT THE SCHEME. ALL P.A.S TO MEET OR EXCEED THE MINIMUM STANDARD OF 9m² AND 1500mm MIN. DEEP FOR 3 BED UNITS.



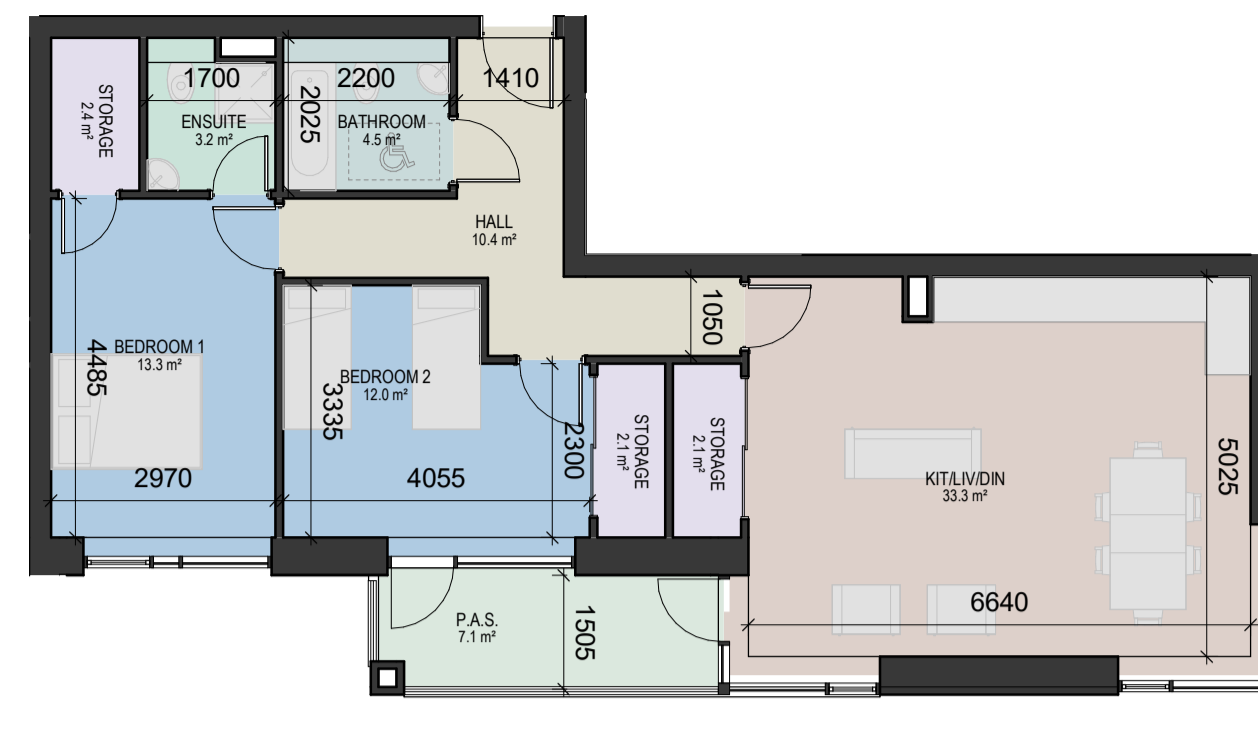
2 Apartment Type A.1

1: 100

APARTMENT TYPE A.1 - 3 BEDS				
	Min. Area (m ²)	Proposed Area (m ²)	Aspect	
Gross Area	90	102	Dual Aspect	
Room	Min. Width (mm)	Proposed Width (mm)	Min. Area (m ²)	Proposed Area
Aggregate Living Area	3800	4870	34	34.6
Bedroom 1	2800	3000	13	14.2
Bedroom 2	2100	2200	7.1	8.1
Bedroom 3	2800	2985	11.4	16.9
Storage			9	9
P.A.S			9	11.1

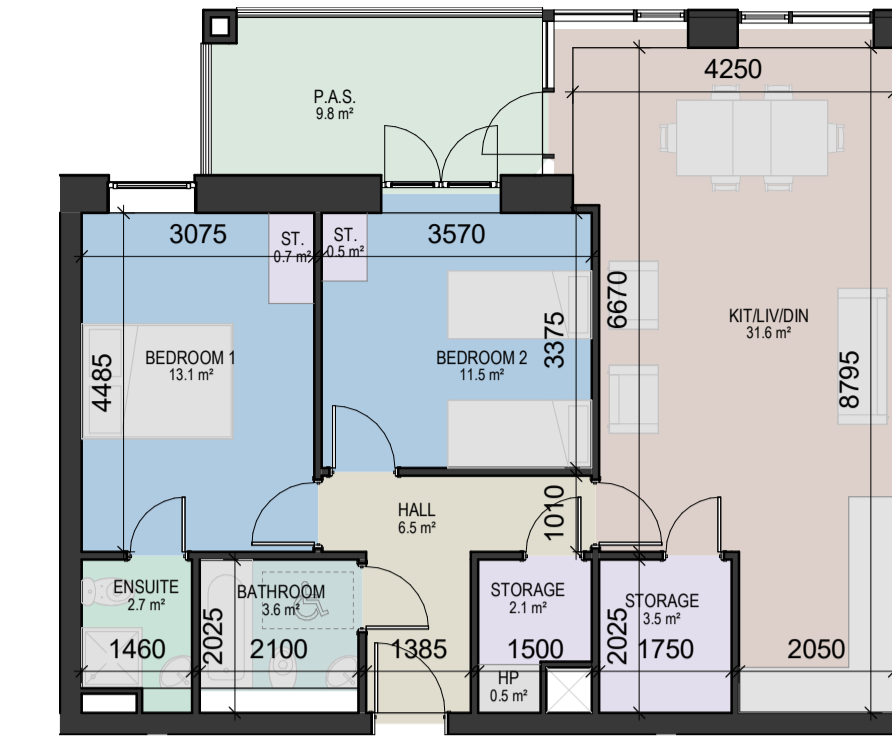
* PRIVATE AMENITY SPACE VARIES DUE TO ELEVATIONAL TREATMENT THROUGHOUT THE SCHEME. ALL P.A.S TO MEET OR EXCEED THE MINIMUM STANDARD OF 9m² AND 1500mm MIN. DEEP FOR 3 BED UNITS.

1: 100
Apartment Type B



APARTMENT TYPE B - 2 BEDS - 4 PERSON				
	Min. Area (m ²)	Proposed Area (m ²)	Aspect	
Gross Area	73	87	Dual Aspect	
Room	Min. Width (mm)	Proposed Width (mm)	Min. Area (m ²)	Proposed Area
Aggregate Living Area	3600	5025	30	33.3
Bedroom 1	2800	2970	13	13.3
Bedroom 2	2800	4055	11.4	12
Storage			6	6.6
P.A.S			7	7.1

* PRIVATE AMENITY SPACE VARIES DUE TO ELEVATIONAL TREATMENT THROUGHOUT THE SCHEME. ALL P.A.S TO MEET OR EXCEED THE MINIMUM STANDARD OF 7m² AND 1500mm MIN. DEEP FOR 2 BED UNITS - 4 PERSON



4 Apartment Type C

1: 100

APARTMENT TYPE C - 2 BEDS - 4 PERSON				
	Min. Area (m ²)	Proposed Area (m ²)	Aspect	
Gross Area	73	80	Dual Aspect	
Room	Min. Width (mm)	Proposed Width (mm)	Min. Area (m ²)	Proposed Area
Aggregate Living Area	3600	4250	30	31.6
Bedroom 1	2800	3075	13	13.1
Bedroom 2	2800	3570	11.4	11.5
Storage			6	5.6
P.A.S			7	9.8

* PRIVATE AMENITY SPACE VARIES DUE TO ELEVATIONAL TREATMENT THROUGHOUT THE SCHEME. ALL P.A.S TO MEET OR EXCEED THE MINIMUM STANDARD OF 7m² AND 1500mm MIN. DEEP FOR 2 BED UNITS - 4 PERSON

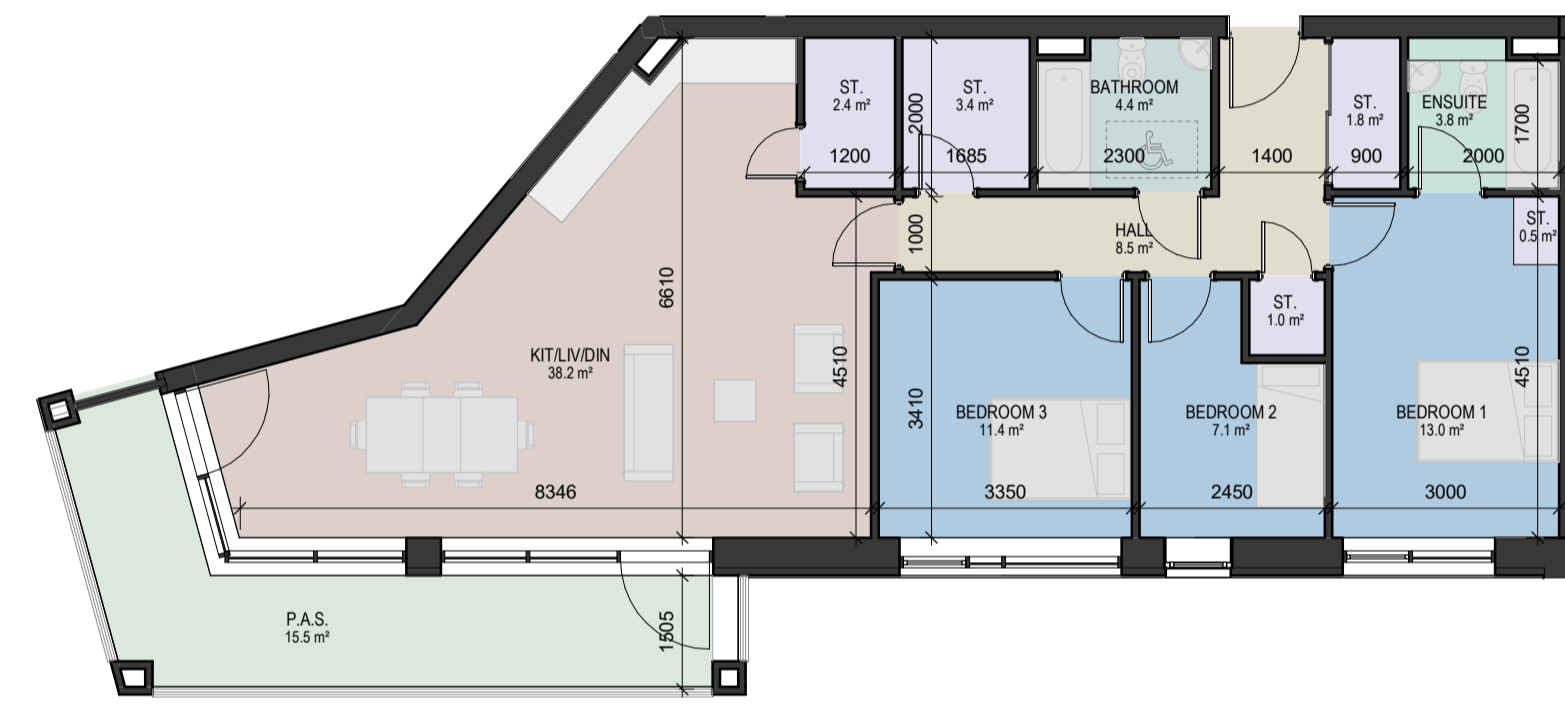


5 Apartment Type E

1: 100

APARTMENT TYPE E - 3 BEDS				
	Min. Area (m ²)	Proposed Area (m ²)	Aspect	
Gross Area	90	101	Dual Aspect	
Room	Min. Width (mm)	Proposed Width (mm)	Min. Area (m ²)	Proposed Area
Aggregate Living Area	3800	4800	34	36.3
Bedroom 1	2800	3000	13	13.3
Bedroom 2	2100	2200	7.1	11.2
Bedroom 3	2800	3100	11.4	11.5
Storage			9	9.1
P.A.S			9	9.1

* PRIVATE AMENITY SPACE VARIES DUE TO ELEVATIONAL TREATMENT THROUGHOUT THE SCHEME. ALL P.A.S TO MEET OR EXCEED THE MINIMUM STANDARD OF 9m² AND 1500mm MIN. DEEP FOR 3 BED UNITS.

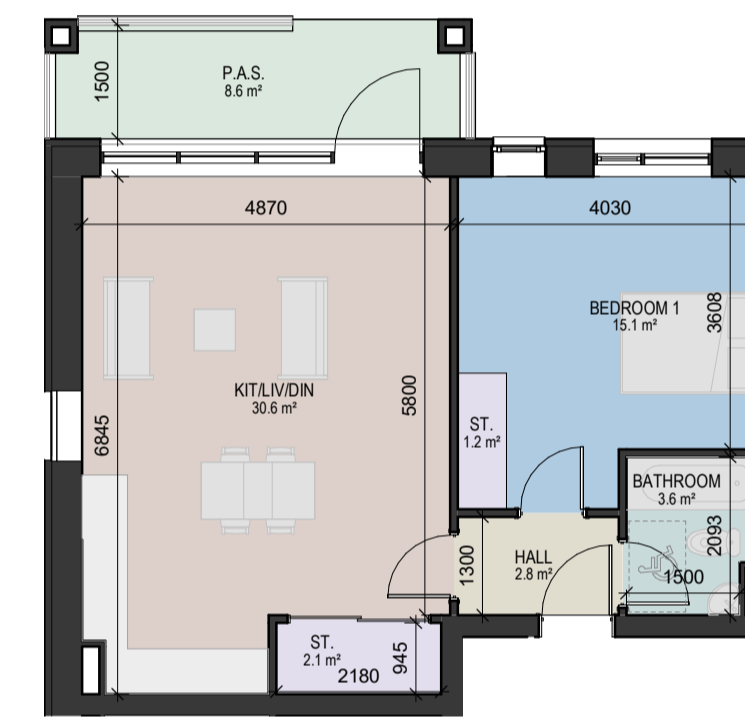


6 Apartment Type F

1: 100

APARTMENT TYPE F - 3 BEDS				
	Min. Area (m ²)	Proposed Area (m ²)	Aspect	
Gross Area	90	100	Dual Aspect	
Room	Min. Width (mm)	Proposed Width (mm)	Min. Area (m ²)	Proposed Area
Aggregate Living Area	3800	4510	34	38.2
Bedroom 1	2800	3000	13	13
Bedroom 2	2100	2450	7.1	7.1
Bedroom 3	2800	3350	11.4	11.4
Storage			9	9.1
P.A.S			9	15.5

* PRIVATE AMENITY SPACE VARIES DUE TO ELEVATIONAL TREATMENT THROUGHOUT THE SCHEME. ALL P.A.S TO MEET OR EXCEED THE MINIMUM STANDARD OF 9m² AND 1500mm MIN. DEEP FOR 3 BED UNITS. CIRCULATION 8.9m²



7 Apartment Type G

1: 100

APARTMENT TYPE G - 1 BED				
	Min. Area (m ²)	Proposed Area (m ²)	Aspect	
Gross Area	45	57	Single Aspect	
Room	Min. Width (mm)	Proposed Width (mm)	Min. Area (m ²)	Proposed Area
Aggregate Living Area	3300	4870	23	30.6
Bedroom 1	2800	4030	11.4	15.1
Storage			3	3.3
P.A.S			5	8.6

* PRIVATE AMENITY SPACE VARIES DUE TO ELEVATIONAL TREATMENT THROUGHOUT THE SCHEME. ALL P.A.S TO MEET OR EXCEED THE MINIMUM STANDARD OF 9m² AND 1500mm MIN. DEEP FOR 1 BED UNIT



8 Apartment Type H

1: 100

APARTMENT TYPE H - 2 BEDS - 4 PERSON				
	Min. Area (m ²)	Proposed Area (m ²)	Aspect	
Gross Area	73	88	Dual Aspect	
Room	Min. Width (mm)	Proposed Width (mm)	Min. Area (m ²)	Proposed Area
Aggregate Living Area	3600	5619	30	33.2
Bedroom 1	2800	3630	13	13.4
Bedroom 2	2800	3284	11.4	13.5
Storage			6	6.3
P.A.S			7	8.6

* PRIVATE AMENITY SPACE VARIES DUE TO ELEVATIONAL TREATMENT THROUGHOUT THE SCHEME. ALL P.A.S TO MEET OR EXCEED THE MINIMUM STANDARD OF 7m² AND 1500mm MIN. DEEP FOR 2 BED UNITS.

Room Type

- BATHROOM
- BEDROOM 1
- BEDROOM 2
- BEDROOM 3
- ENSUITE
- HALL
- HP
- KIT/LIV/DIN
- P.A.S.
- STORAGE

PO1	06/12/2022	Planning Issue	
Rev	Date	Description	Issued By

PLANNING

Client: Westar Homes Limited

Project: Residential @ Finlay Park
Finlay Park, Naas, Co. Kildare

Drawing Title: Apartment Types 01

Drawn	Checked	Paper Size	Scale	Date
VM	BB	A1	1: 100@A1	06/12/2022

Project No.	Drawing No.	Classification	Revision
PE17019	6200		P01

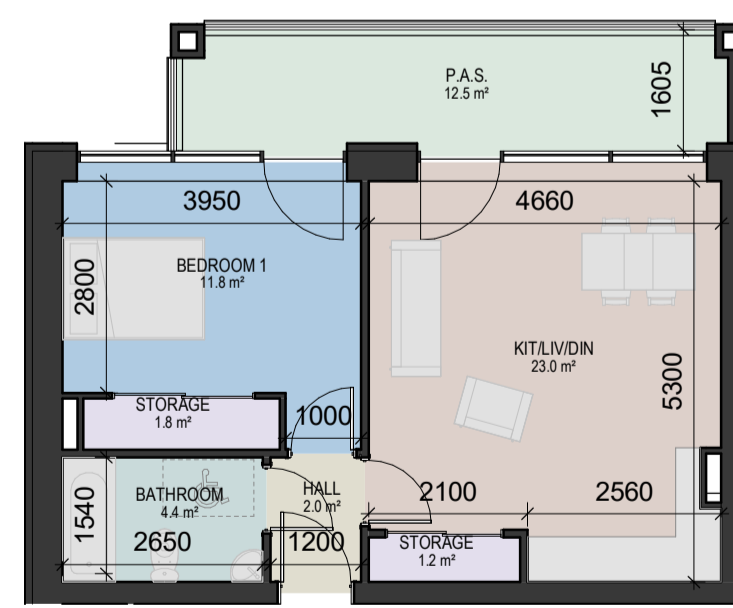
File Name: PE17019-CWO-01-ZZ-DR-A-6200

Status: Suitable for planning



No. 1 Sarsfield Quay, Dublin 7, D07 RF9H
t: 01 518 0170 e: admin@cwoarchitects.ie
Dublin | Cork | Galway | London | UK & Europe +
www.cwoarchitects.ie

Please consider the environment before printing this sheet

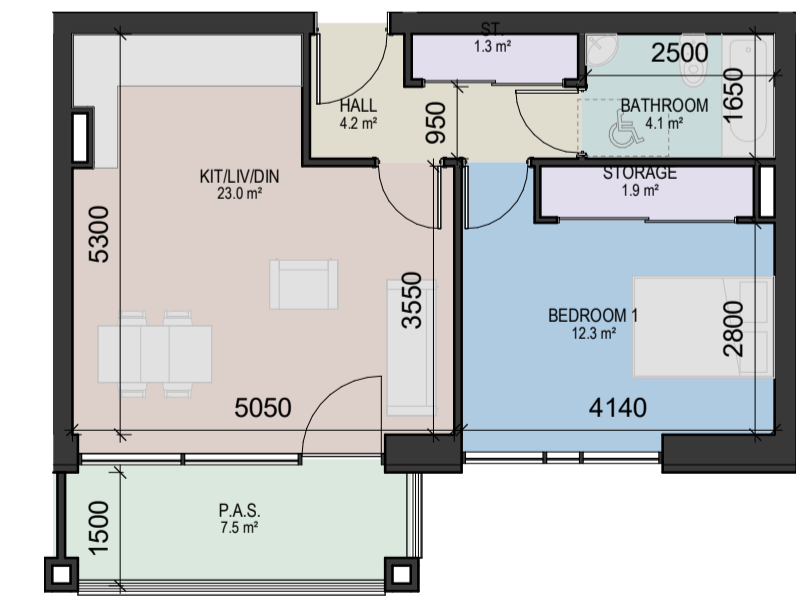


9 Apartment Type I

1: 100

APARTMENT TYPE I - 1 BED				
	Min. Area (m ²)	Proposed Area (m ²)	Aspect	
Gross Area	46	63	Single Aspect	
Room	Min. Width (mm)	Proposed Width (mm)	Min. Area (m ²)	Proposed Area
Aggregate Living Area	3300	4460	23	23
Bedroom 1	2800	3950	11.4	11.8
Storage			3	3
P.A.S			5	12.5

* PRIVATE AMENITY SPACE VARIES DUE TO ELEVATIONAL TREATMENT THROUGHOUT THE SCHEME. ALL P.A.S TO MEET OR EXCEED THE MINIMUM STANDARD OF 9m² AND 1500mm MIN. DEEP FOR 1 BED UNIT

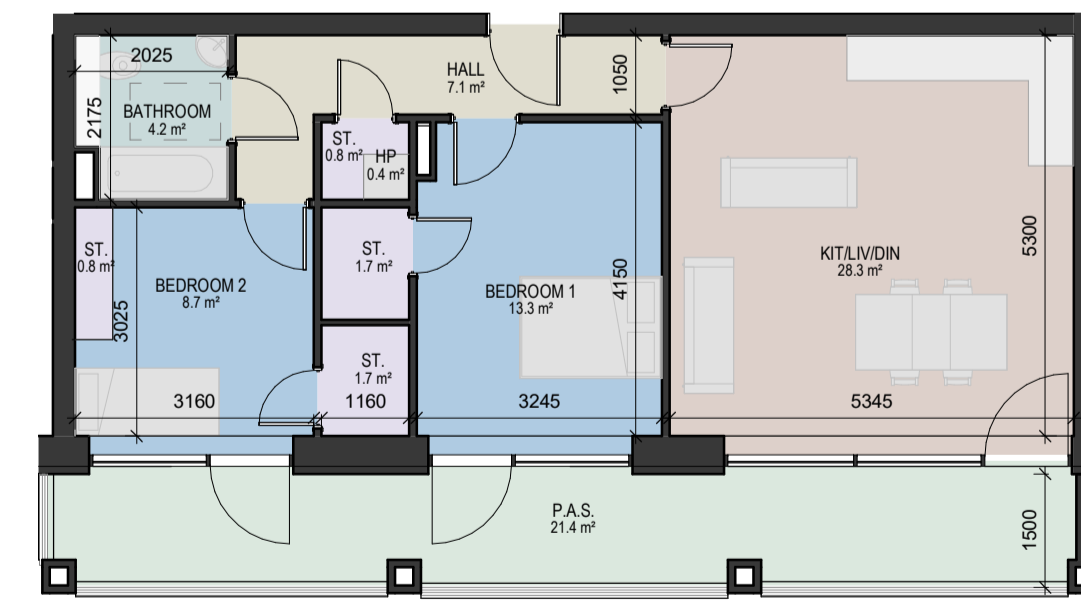


10 Apartment Type J

1: 100

APARTMENT TYPE J - 1 BED				
	Min. Area (m ²)	Proposed Area (m ²)	Aspect	
Gross Area	45	49	Single Aspect	
Room	Min. Width (mm)	Proposed Width (mm)	Min. Area (m ²)	Proposed Area
Aggregate Living Area	3300	5015	23	23
Bedroom 1	2800	4175	11.4	12.3
Storage			3	3.2
P.A.S			5	7.5

* PRIVATE AMENITY SPACE VARIES DUE TO ELEVATIONAL TREATMENT THROUGHOUT THE SCHEME. ALL P.A.S TO MEET OR EXCEED THE MINIMUM STANDARD OF 9m² AND 1500mm MIN. DEEP FOR 1 BED UNIT

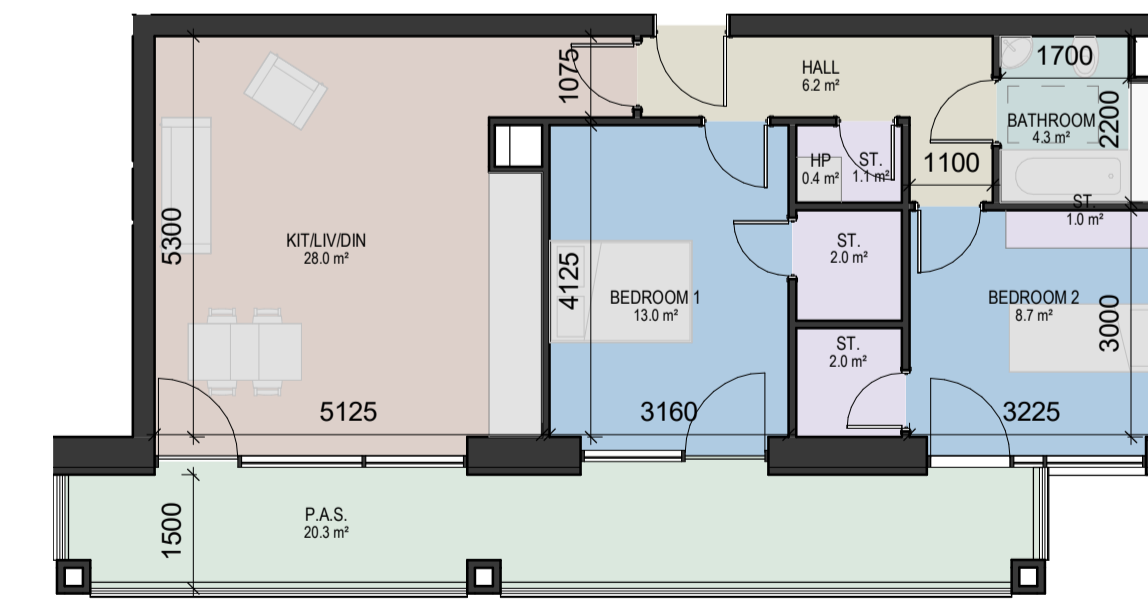


11 Apartment Type K

1: 100

APARTMENT TYPE K - 2 BEDS - 3 PERSON				
	Min. Area (m ²)	Proposed Area (m ²)	Aspect	
Gross Area	63	70	Single Aspect	
Room	Min. Width (mm)	Proposed Width (mm)	Min. Area (m ²)	Proposed Area
Aggregate Living Area	3600	5345	28	28.3
Bedroom 1	2800	3245	13	13.3
Bedroom 2	2100	3160	7.1	8.7
Storage			5	5
P.A.S			6	21.4

* PRIVATE AMENITY SPACE VARIES DUE TO ELEVATIONAL TREATMENT THROUGHOUT THE SCHEME. ALL P.A.S TO MEET OR EXCEED THE MINIMUM STANDARD OF 6m² AND 1500mm MIN. DEEP FOR 2 BED UNITS - 3 PERSON

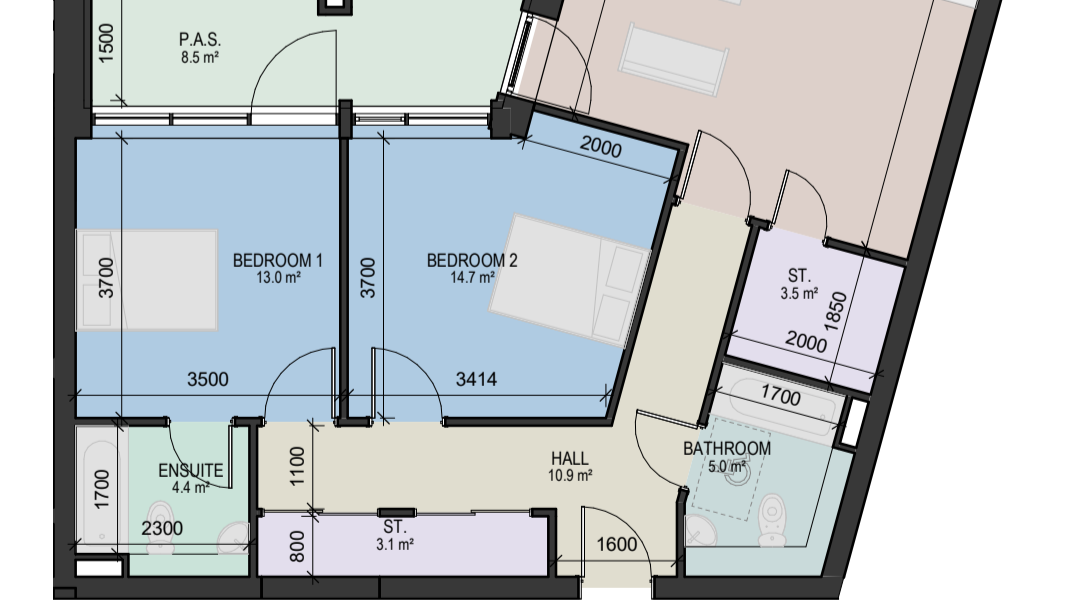


12 Apartment Type K.1

1: 100

APARTMENT TYPE K.1 - 2 BEDS - 3 PERSON				
	Min. Area (m ²)	Proposed Area (m ²)	Aspect	
Gross Area	63	70	Single Aspect	
Room	Min. Width (mm)	Proposed Width (mm)	Min. Area (m ²)	Proposed Area
Aggregate Living Area	3600	5125	28	28
Bedroom 1	2800	3160	13	13
Bedroom 2	2100	3225	7.1	8.7
Storage			5	6.1
P.A.S			6	20.3

* PRIVATE AMENITY SPACE VARIES DUE TO ELEVATIONAL TREATMENT THROUGHOUT THE SCHEME. ALL P.A.S TO MEET OR EXCEED THE MINIMUM STANDARD OF 6m² AND 1500mm MIN. DEEP FOR 2 BED UNITS - 3 PERSON



13 Apartment Type H.1

1: 100

APARTMENT TYPE H.1 - 2 BEDS - 4 PERSON				
	Min. Area (m ²)	Proposed Area (m ²)	Aspect	
Gross Area	73	99	Dual Aspect	
Room	Min. Width (mm)	Proposed Width (mm)	Min. Area (m ²)	Proposed Area
Aggregate Living Area	3600	5300	30	40.9
Bedroom 1	2800	3630	13	13.4
Bedroom 2	2800	3284	11.4	14.2
Storage			6	6.6
P.A.S			7	8.5

* PRIVATE AMENITY SPACE VARIES DUE TO ELEVATIONAL TREATMENT THROUGHOUT THE SCHEME. ALL P.A.S TO MEET OR EXCEED THE MINIMUM STANDARD OF 7m² AND 1500mm MIN. DEEP FOR 2 BED UNITS.