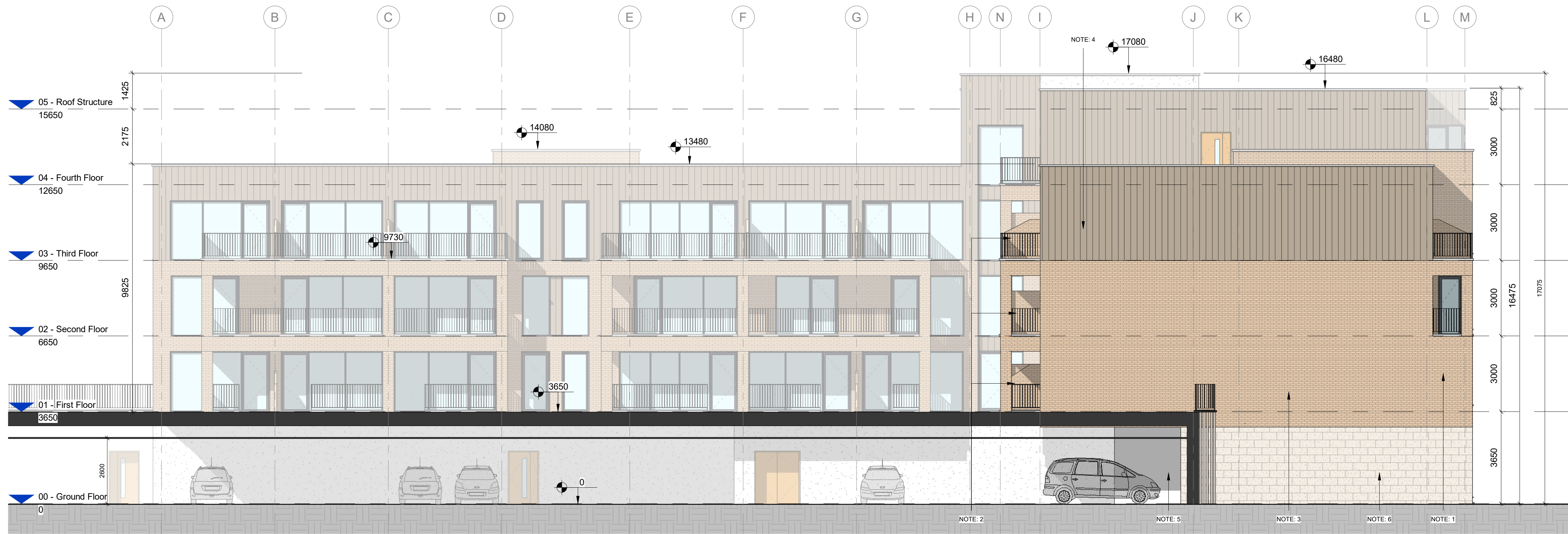
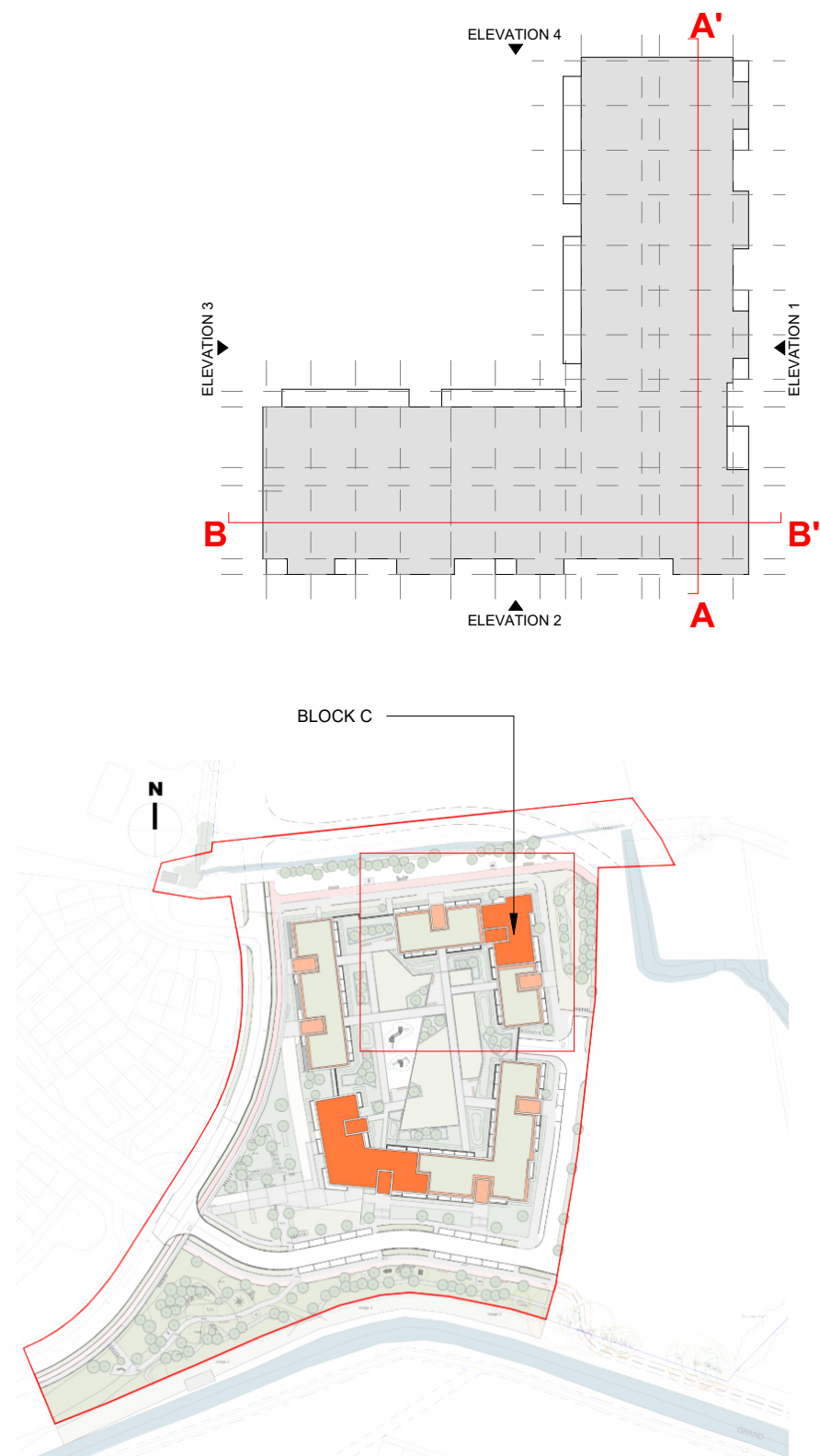
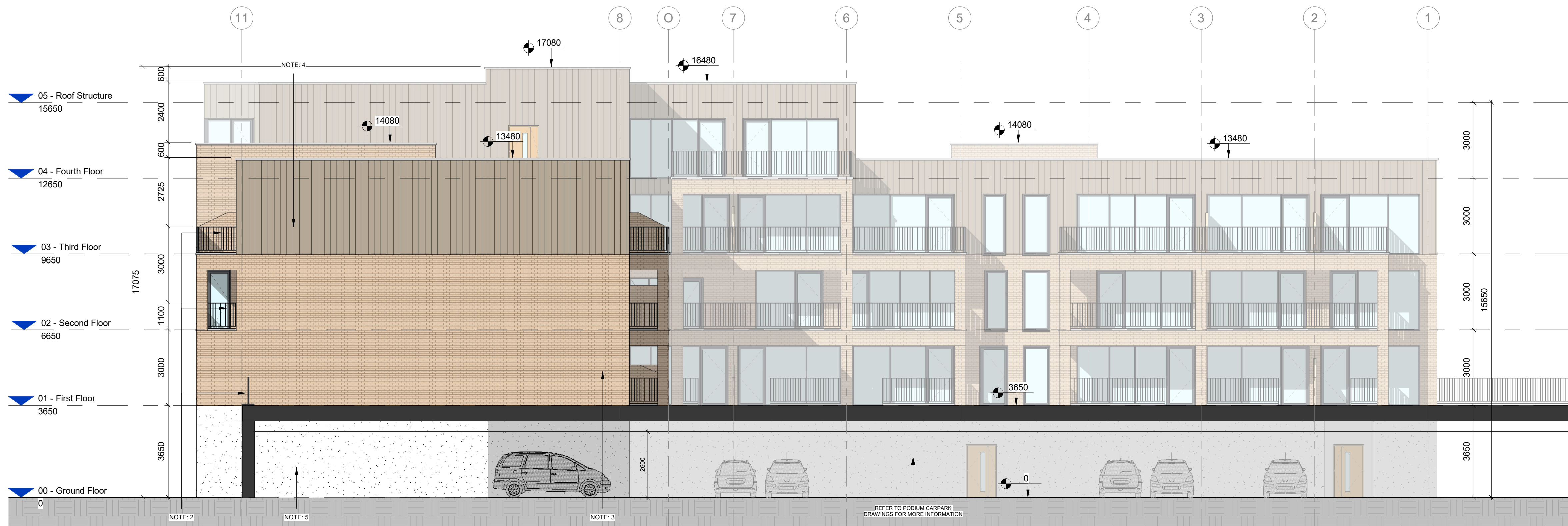


# DESIGN INTENT DRAWING



**1** Elevation 3  
1:100



**2** Elevation 4  
1:100

**MATERIAL LIST:**

- NOTE 1: PROPOSED FINISH: POWDER-COATED ALUMINIUM/PVC FRAMED WINDOWS/DOORS
- NOTE 2: PROPOSED FINISH: METAL RAILINGS
- NOTE 3: PROPOSED FINISH: SELECTED LIGHT BROWN / OFF-CREAM BRICKWORK
- NOTE 4: PROPOSED FINISH: SELECTED DARK METAL CLADDING
- NOTE 5: PROPOSED FINISH: SELECTED OFF-WHITE COLOURED RENDER
- NOTE 6: PROPOSED FINISH: SELECTED OFF-WHITE EMBOSSED BRICKWORK

Rev	Date	Description	Issued By
P01	06/12/2022	Planning Issue	

Project Stage  
**PLANNING**

Client:  
Westar Homes Limited

Project:  
Residential @ Finlay Park  
Finlay Park, Naas, Co. Kildare

Drawing Title:  
Zone 1 - Duplex Block C - Elevations

Drawn	Checked	Paper Size	Scale	Date
VM	BB	A1	As indicated	06/12/2022

Project No.	Drawing No.	Classification	Revision
PE17019	2067		P01

File Name:  
PE17019-CWO-01-ZZ-DR-A-2067

Status:  
**Suitable for planning**



No.1 Sarsfield Quay, Dublin 7, D07 R9FH  
t: 01 518 0170 e: admin@cwoarchitects.ie  
Dublin | Cork | Galway | London | UK & Europe +  
www.cwoarchitects.ie