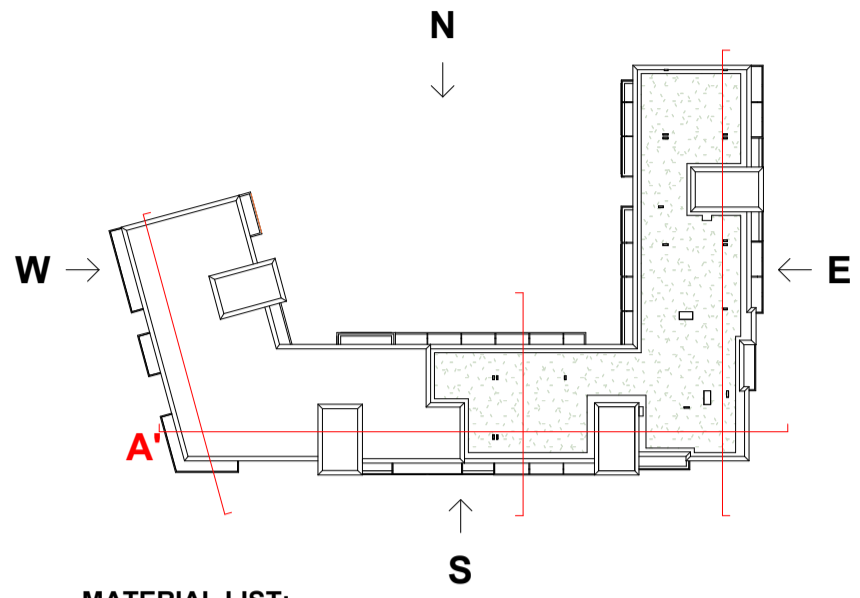


DESIGN INTENT DRAWING



MATERIAL LIST:

- NOTE 1:** PROPOSED FINISH: POWDER-COATED ALUMINIUM/PVC FRAMED WINDOWS/DOORS
- NOTE 2:** PROPOSED FINISH: METAL RAILINGS
- NOTE 3:** PROPOSED FINISH: SELECTED LIGHT BROWN / OFF-CREAM BRICKWORK
- NOTE 4:** PROPOSED FINISH: SELECTED DARK METAL CLADDING
- NOTE 5:** PROPOSED FINISH: SELECTED OFF-WHITE COLOURED RENDER
- NOTE 6:** PROPOSED FINISH: SELECTED OFF-WHITE EMBOSSED BRICKWORK



01 - South (Commercial Unit entrance)

1 : 200



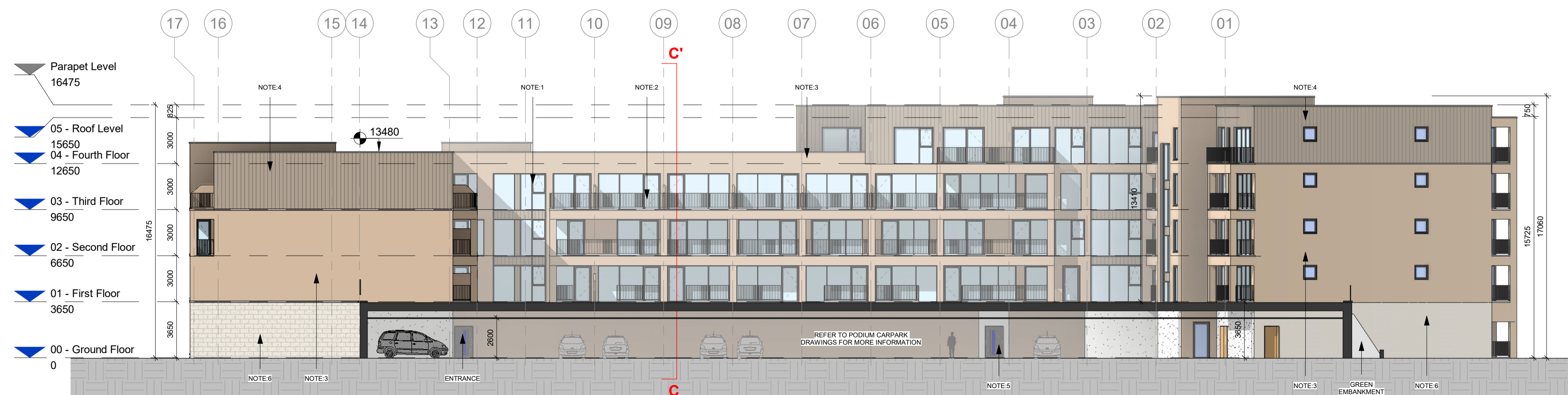
03 - East

1 : 200



02 - West

1 : 200



04 - North (Courtyard)

1 : 200

| Rev | Date | Description | Issued By |
|-----|------------|----------------|-----------|
| P01 | 06/12/2022 | Planning Issue | |

Project Stage

PLANNING

Client:

Westar Homes Limited

Project:

Residential @ Finlay Park
Finlay Park, Naas, Co. Kildare

Drawing Title:

Zone 1 - Apart - Block B - Elevations

| Drawn | Checked | Paper Size | Scale | Date |
|-------|---------|------------|--------------|------------|
| VM | BB | A1 | As indicated | 06/12/2022 |

| Project No. | Drawing No. | Classification | Revision |
|-------------|-------------|----------------|----------|
| PE17019 | 2043 | | P01 |

File Name
PE17019-CWO-01-ZZ-DR-A-2043

Status:

Suitable for planning